



Career Degrees Course Guide

lincolncollege.ac.uk

Lincoln College
University
Centre



Table of Contents

5

Welcome

6

Why Lincoln
College University
Centre?

8

Our Facilities

10

Support at
College

12

Living and
Studying in
Lincoln

18

How to Apply

20

Jargon Busting

22

Qualifications

24

UCAS Tariffs

26

Access to HE

28

Lincolnshire
Institute of
Technology (IoT)

30

Air and Space
Institute (ASI)

32

Our Courses

112

What Next?



Welcome

Welcome to Lincoln College University Centre

It is great that you are considering studying your Higher Education course with us - whether that's a Foundation Degree, HNC/HND, a full BA/BSc honours degree or a top-up degree.

Our Career Degrees at Lincoln College and Newark College have been designed to support both the development of academic knowledge and vocational skills. We've designed our courses with you in mind and in conjunction with employers and industry experts to ensure that the curriculum is relevant and aligned with the demands of local and regional industries.

Our welcoming and talented staff bring their own industry experience and vocational expertise to enrich the delivery of our programmes, ensuring that the employer context is embedded throughout.

We believe that our Career Degrees offer a more holistic Higher Education experience with a genuine focus on graduate employability and the development of transferable skills.

Whilst studying a Higher Education course in a predominately Further Education institution may not be suited to everyone, our students frequently cite the benefits of smaller class sizes and higher levels of tutor support.

Timetables are also condensed, which enables our students to maintain regular part-time work or to manage caring responsibilities and family commitments.

We would love to welcome you to the vibrant City of Lincoln or quaint market town of Newark, to start your Higher Education journey with a Career Degree programme at our Lincoln College University Centre.



Becki Hamnett
Director of Higher Education
Lincoln College University Centre

Why Lincoln College University Centre?

A highly competitive job market across most sectors can make securing graduate roles challenging.

That's why we've developed Career Degrees, to give our students the opportunity to get ahead of the competition at interview and help them secure the career of their dreams.

Why choose us?

There are many reasons our students choose to study their degree with us, whether it is continuing from Further Education or coming back to study after a career change.

We've designed our Career Degrees to focus on preparing graduates for employment in their chosen sector or industry by supporting the development of both academic knowledge and vocational skills.

Our classes are smaller which means our students can receive more one-to-one time with their tutors, as well as engaging debates and collaborative working with fellow students.

With our condensed timetables, students may choose to work while studying, look after family or enjoy a better study-life balance.

A bursary of up to £500 for full-time students and up to £250 for part-time students over the course of the Career Degree programme is also available to our students. The bursary is designed to help support any aspect of independent study which could include: equipment such as a laptop or camera, home office furniture, software such as Adobe or course specific equipment like tools, uniforms or books.

In addition, course coordinators are allocated an additional payment to spend each academic year on enhancements that will support the development of employability skills and progression to graduate-level employment.



Studying a degree at college gives students the same qualification as it would at a university. The only difference between the two is the environment students study in!

Smaller

Lecture and tutor groups

Condensed

Timetables

Friendly

Campuses at Lincoln and Newark

Specialist

Team of professional Student Support Advisors

Bursary

Of up to £500

Graduate

In the historic Lincoln Cathedral

Our Facilities

Our students have access to a wide range of facilities - from sports and leisure, to refectories, libraries and dedicated study spaces.

Sports and Leisure

Our Lincoln College campus has its own leisure complex with a purpose-built gym, physical performance lab, outdoor gym, basketball courts and five-a-side football pitches.

Our students can enjoy a full range of beauty therapies and massages or visit our hair salon, Aura.

Lincoln College is now also home to Escape Lincoln. Here students can play amazing games such as Sherlock, The Magic Emporium, and Contagion.

Refectories

The Lincoln College campus has three refectories and Costa Coffee concessions offering a range of healthy and fast-food options. Our Newark College campus is home to NG24 café which also offers freshly cooked food and confectionery items.

All these facilities are available at heavily discounted student rates.

Libraries

Our spacious and well-equipped libraries are designed to provide a safe, supportive and stimulating environment for independent study.

Students have access to computers and laptops to use within the library or can also use their own laptop or mobile device with WiFi hotspots available across campus.

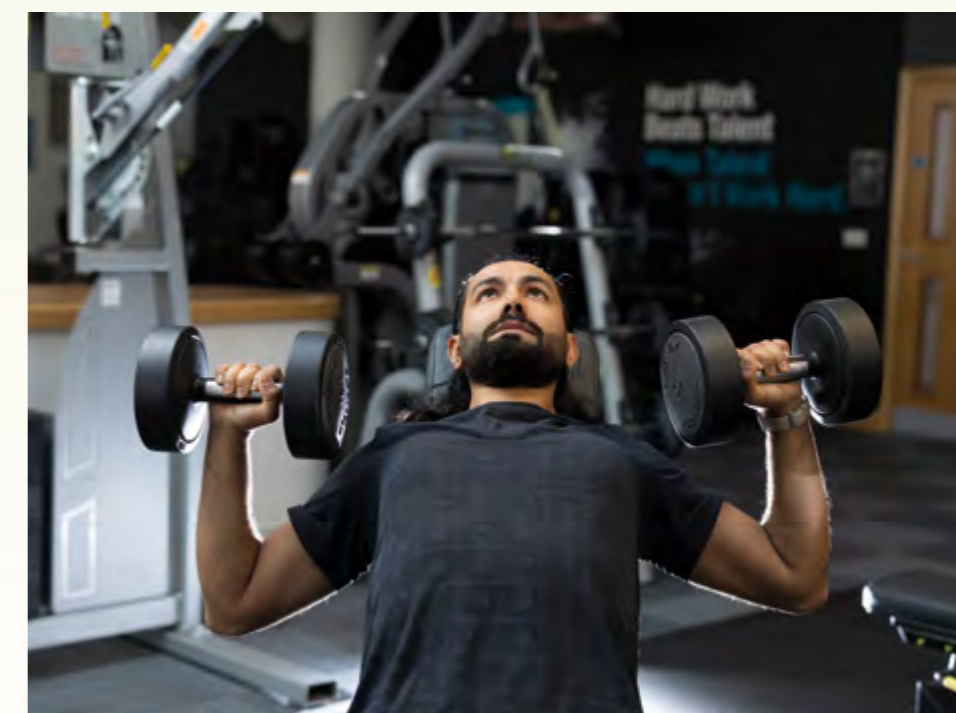
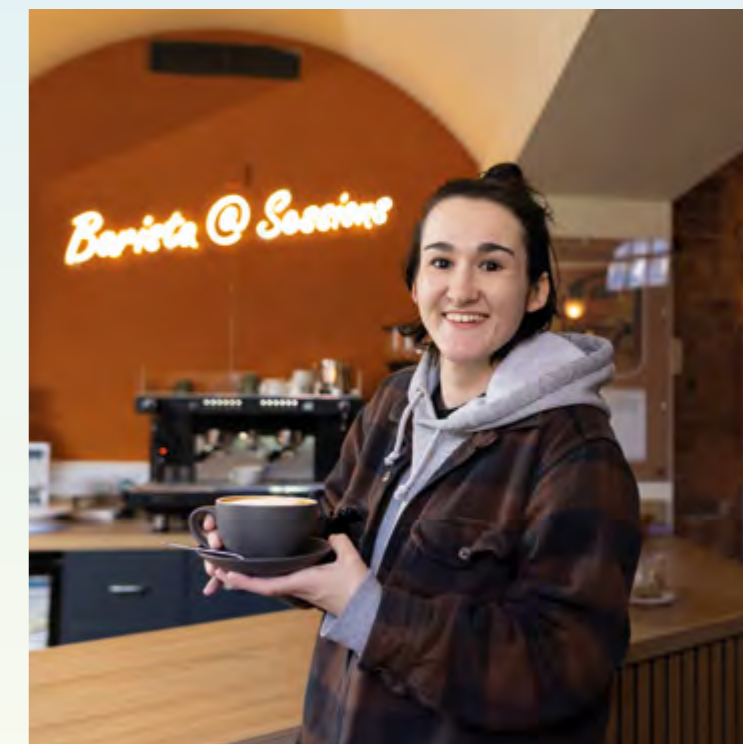
A team of experienced library staff are always on hand to help learners find resources for their studies.

Our Library Information Advisers offer study skills workshops including locating information for assignments and referencing.

HE Common Room and Study Room

Our Higher Education students have access to the HE Common Room (The Drawing Room) in the newly refurbished Gibney building, as well as a HE Study Room in our Monks building (M127). This Study Room offers computer access and WiFi, an MFD printer and kitchen area with free tea and coffee.

Students studying at our Christ's Hospital Terrace campus also have a dedicated common room to study, unwind and relax in. This also has kitchen facilities with free tea and coffee.



Support at College

We offer comprehensive and dedicated one-to-one support from enquiry to transition - from individual campus tours, to support with the application process or student finance, we're here to support our students every step of the way.

We have a specialist team of professional Student Support Advisors who can offer guidance and support on a wide range of financial, personal and career-related issues.

Our Student Services team are here to help students with any questions or problems they have before, during and after their time at College.

Freddie the therapy dog

Freddie joined Lincoln College from the Autism Dogs CIC charity and went through a rigorous training programme before becoming a fully-fledged therapy dog.

Freddie can often be seen on campus with his handlers - supporting students in the classroom, when they need some comfort in communal areas, and even during exams!

Follow Freddie's activities on Instagram: [@freddiethedoglc](https://www.instagram.com/freddiethedoglc)



Bespoke Support

Lincoln College believes that all students should benefit from studying and learning, regardless of their background, and we endeavour to ensure that barriers students face are limited. We are committed to supporting all our students and wish to ensure that under-represented groups are able to study and achieve their best. We address areas for improvement through our Access and Participation Plan which can be found on the Lincoln College website.

Lincoln College offer lots of opportunities to enhance our students' studies including one-to-one sessions, workshops and seminars throughout the year.

These include:

- One-to-one coaching to equip students with skills to be successful in their educational and life journey.
- One-to-one appointments with our academic writing officer to help to improve students' critical thinking, writing style and assignment structure.
- Workshops and seminars covering topics such as stress management, time management, how to write well and how to write a dissertation.

Careers Advice

Personal one-to-one careers guidance is available for all our students. Our fully qualified and experienced careers guidance practitioners provide impartial advice and guidance.

Our qualified Careers Guidance Advisers support learners in their career planning and help them to make well informed decisions about their progression and future plans.

They can help with:

- Career planning and career decisions
- Researching career opportunities
- UCAS applications and personal statements
- Job search and application skills, including CV advice

We help students to draw an action plan of the steps they need to take to achieve their career and education goals.



Financial Support

Certain students may be eligible for additional financial support. Some of the financial support available may include:

- Hardship Fund
- Disabled Student Allowance (DSA)
- Lincoln College Returner Incentive
- Access Scholarship
- APP Enhanced Bursary

For more information about our support services for Career Degree students, visit our dedicated support webpage.

www.lincolncollege.ac.uk/support/support-for-career-degree-students



We're committed to helping to increase the number of people entering Higher Education and ensuring that they are able to continue with their studies and achieve their best, particularly those who are statistically less likely to study at degree level.

APP Enhanced Bursary:

Additional funding support will be available for:

- Mature students (aged 21 or over at the start of their course): £100
- Student parents in receipt of both a parental learning allowance and a childcare grant*: £500
- Student parents in receipt of a parental learning allowance only*: £200
- Students aged 18-20 years old from a Low Participation Neighbourhood: £150
- Care leavers*: £500
- Registered carers*: £500

Access Scholarship:

Additional funding support will be available for students with a household income of less than £25,000:

- Full-Time: £200
- Part-Time: £100

For more information, please email: he@lincolncollege.ac.uk

Full terms and conditions can be found on our website.

www.lincolncollege.ac.uk/university-centre



Living and Studying in Lincoln

Our Lincoln College campus sits in the heart of the beautiful, vibrant and culturally diverse City of Lincoln.

Lincoln offers a great mix of wonderful gothic architecture, quaint cobbled streets and modern city living.

The 'Uphill' historic quarter is home to the world-famous Lincoln Cathedral and Lincoln Castle, which holds an original 1215 Magna Carta – something people travel from all over the world to see.

Cushioned with boutique shops, restaurants and traditional pubs – it's a global tourist destination.

The south of the city is packed with high street shops, great places to eat and buzzing bars, clubs, restaurants and coffee shops.

Lincoln is a green city with a relaxed ambiance. It has low crime rates and a diverse and accepting local community.

There are plenty of live-music venues and open mic sessions, a growing LGBT scene and a strong alternative culture following.

Lincoln is now the home of the international Steampunk movement and once a year the city is awash with a celebration of Sci-fi Victoriana as the Punks meet for their annual convention.

The City has excellent transport links and is just an hour from Nottingham and the East Coast.

“The college were absolutely fabulous, and I've made lots of friends on the course”



Helen Proctor
BSc (Hons) Clinical Herbalism



Lincoln City Map

Lincoln is a beautiful, buzzing city with a great mix of heritage and modern living. You'll be a five minute walk from top high street shops and great independent traders, coffee shops, restaurants, bars, a multiplex cinema and places to hang out.

Entertainment

- 1 Lincoln Castle
- 2 Lincoln Cathedral
- 3 Usher Art Gallery
- 4 Temple Gardens
- 8 Lincoln Museum and Usher Gallery
- 11 The New Theatre Royal
- 13 Escape Lincoln
- 16 Carousel
- 17 Gloryholes
- 22 The Drill
- 23 Lincoln Library
- 25 Brayford Waterfront
- 27 Odeon Cinema
- 37 Everyman Cinema

Coffee Shops

- 19 Coffee Aroma
- 21 Angel Coffee House
- 30 High Bridge Café
- 34 200 Degrees
- 41 Starbucks
- 42 Costa Coffee

Places to Eat

- 5 Happy Culture Café
- 6 Slow Rise
- 7 Café Gelato
- 9 Café Portico
- 10 Kine
- 12 Kaspas
- 14 Rising Café
- 15 FRIDAYS
- 18 Little Korea
- 20 Franco Manca
- 26 Nandos
- 28 Wagamama
- 31 Doughnotts
- 32 Cosy Club
- 33 Three Joes
- 35 Bar Unico
- 36 The Botanist
- 38 Tortilla
- 39 The Engine Shed

Shops

- 29 Waterside Shopping Centre
- 40 St Mark's Shopping Centre

Places to Sleep

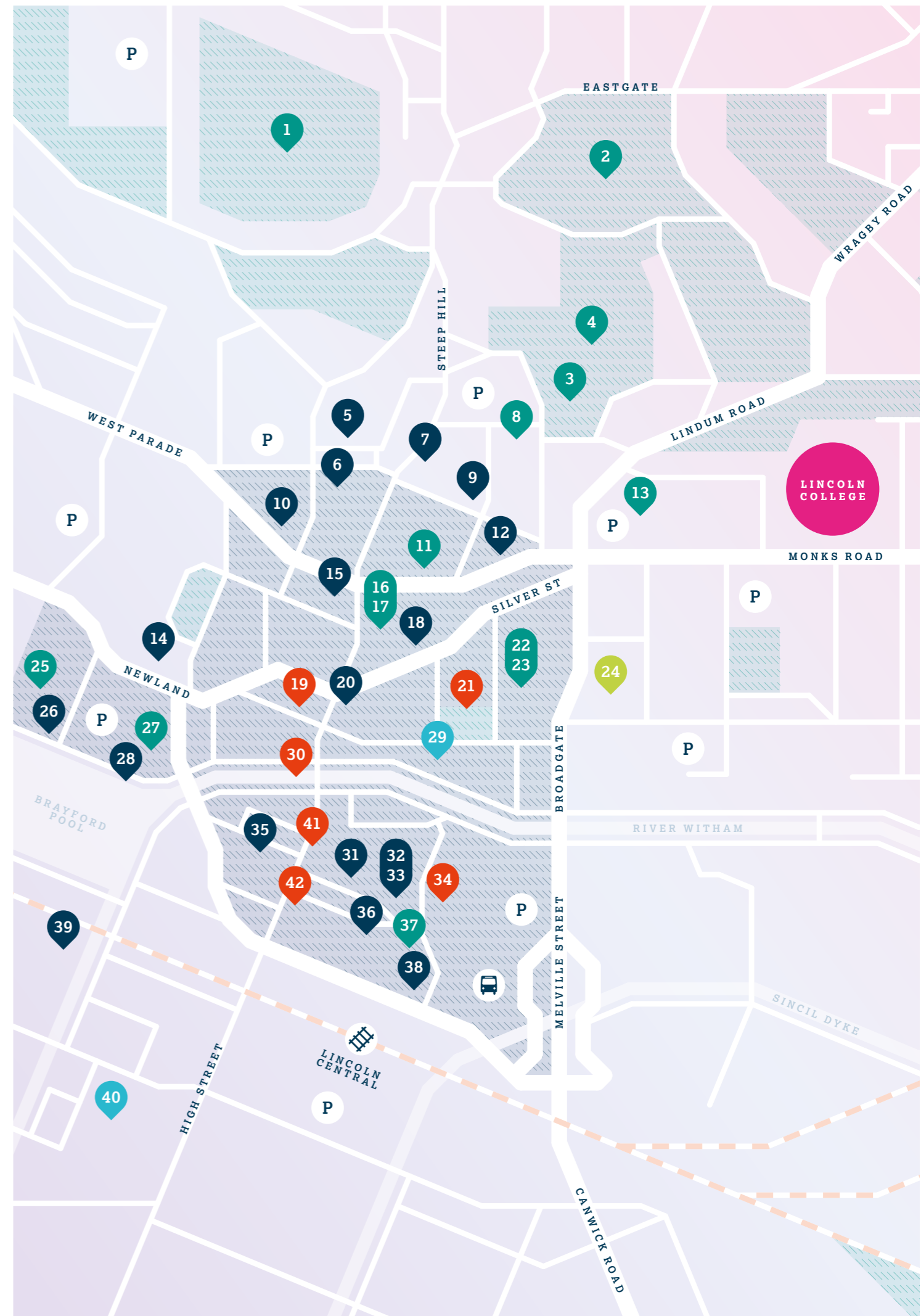
- 24 Premier Inn

Key:

- P Parking
- 🚉 Train Station
- 🚌 Bus Station

Did you know?

Whatever your passion, from music, film and literature to sport, gaming, shopping, beauty or eating, there's something for you.



Newark Town Map

Newark-on-Trent is a thriving market town, and with great road and rail links, you can travel to the cities of Nottingham and Lincoln in around 30 minutes.

Entertainment

- 1 Northgate Retail Park
- 3 The Maltings
- 6 Newark Wharf
- 9 Newark Castle
- 12 Town Hall Museum & Art Gallery
- 15 Palace Theatre
- 16 National Civil War Centre
- 18 St Mary's Remembrance Gardens
- 19 UK Superbowl
- 26 Odeon Cinema
- 27 Newark Library
- 28 Beaumont Gardens
- 29 Sherwood Avenue Park
- 30 Friary Park

Coffee Shops

- 2 The Coffee Chain
- 8 Stray's Coffee
- 14 Starbucks
- 21 Costa Coffee

Places to Eat

- 5 Pizza Express
- 7 Papa Johns Pizza
- 10 Swan & Salmon
- 11 Tambo Lounge
- 13 Newark Royal Market
- 17 Thyme Out
- 23 PJ's American Diner
- 25 Pastability
- 31 Greggs

Shops

- 4 Morrisons
- 20 High Street Shops
- 22 St Marks Place Shopping Centre

Places to Sleep

- 24 Travelodge

Key:

- P Parking
- 🚉 Train Station
- 🚌 Bus Station

Did you know?

The town offers a full range of facilities, affordable housing and a traditional community atmosphere. It has a vibrant market four days a week and is host to a growing number of events that celebrate music including jazz and folk festivals.



How to Apply

First, visit our website:
www.lincolncollege.ac.uk/university-centre

All our courses are listed on our website, which provides more information about the programme as well as links to apply.

Full-Time

After carrying out initial research, visit the UCAS website to apply at:
www.ucas.com

It will ask for the UCAS Institution Code when filling the form in.
Please use: **L42**

Details of the UCAS course codes can be found on the individual course pages.

Part-Time

Part-time courses can be applied directly through the College via our website portal:
www.lincolncollege.ac.uk
or call: **030 030 32435**

Open Days

We know choosing a place to study a degree is a big commitment and a significant investment. We would advise students to visit any institution to take a look around and chat to tutors before applying.

See our website for our upcoming Open Day dates:
www.lincolncollege.ac.uk/open-days

Or call us to arrange a one-to-one campus tour, meet our students and tutors and check out our community.



Jargon Busting

Academic Year

This is the teaching year which begins in September and ends the following summer.

Validated By

The institution that awards the qualification.

Accredited By

The assessment board that fosters and monitors high quality educational and professional standards.

Mature Student

Students in education over the age of 21.

UCAS

Universities and Colleges Admissions Service (UCAS) for the UK. UCAS is the organisation that centrally administers the full-time undergraduate application process.

NSS

The National Student Survey (NSS) gathers opinions from students about their time in Higher Education, asking them to provide honest feedback on what it has been like to study on their course at their institution.

Student Loans Company

The Student Loans Company (SLC) is a non-profit making government-owned organisation that administers loans and grants to students in universities and colleges in the UK.

Maintenance Loan

The main source of financial help for students towards living costs is the Maintenance Loan. The Government provides these low interest loans. Graduates do not need to begin repayment of loans until they have reached a specific level of income.

Tuition Fee Loan

A tuition fee loan can cover the cost of the course fees charged for a Higher Education course. This loan is repayable but not until the student has finished or left their course and their income is over the repayment threshold.

Further Education (FE)

Education below the level of a university degree for people who have left school.

Higher Education (HE)

Education at a college or university where subjects are studied at an advanced level.

Foundation Degree

A two-year programme (if studied full-time) resulting in a Level 5 qualification on completion. Equal to the first two years of a three-year Bachelor's degree course, it is possible to then progress to a linked Top-Up degree course on completion, with the award of a full honours degree after a further year of study.

Top-Up Degree

Top-Up degrees are for HND or Foundation degree holders in relevant subjects to progress to a full honours degree.

Undergraduate Degree

A student undertaking a first degree, usually a BA (Bachelor of Arts) for a degree in the arts and BSc (Bachelor of Science) for a degree in the sciences. Students are referred to as graduates when they have completed their degree.

Postgraduate Degree

A qualification that is undertaken after the completion of an undergraduate degree. A postgraduate degree can take the form of a Master's (MSc) degree, a PhD or an industry-specific qualification.

Higher Technical Qualifications (HTQs)

HTQs are technical qualifications that have been developed by employers and awarding bodies so students can develop the skills that employers want.

Qualifications

Levels	Qualification	Abbreviation
Level 4	Certificate of Higher Education	CertHE
	Higher National Certificate	HNC
	Higher Technical Qualifications	HTQ
Level 5	Higher Technical Qualifications	HTQ
	Higher National Diploma	HND
	Foundation Degree	FdA, FdSc
	Diploma of Higher Education	DipHE
Level 6	Bachelor's Degree	BA, BSc
	Bachelor's Degree with Honours	BA/BSc (Hons)
	Higher Apprenticeships	HA
	Professional Graduate Diploma in Education	PGDE
Level 7	Master's Degree	MA, MSc, MBA
	Postgraduate Diploma	PGDip
	Postgraduate Certificate	PGCert
Level 8	Doctorate	PhD



UCAS Tariff

UCAS Tariff points translate qualifications and grades into a numerical value. Some universities and colleges use UCAS Tariff points in their course entry requirements, but this doesn't mean they won't consider qualifications that don't appear on the Tariff – so make sure to check the course entry requirements carefully.

For more information, the UCAS website has a handy tariff calculator that can be used to work out how many UCAS points your qualifications are worth: www.ucas.com/ucas/tariff-calculator



A Levels		AS Levels		Extended Project Qualification	
A Levels	UCAS Points	AS Levels	UCAS Points	EPQ	UCAS Points
A*	56	A	20	A*	28
A	48	B	16	A	24
B	40	C	12	B	20
C	32	D	10	C	16
D	24	E	6	D	12
E	16	—	—	E	8

T Levels	UCAS Points	A Level Equivalent
Distinction* (A* on the core and distinction in the occupational specialism)	168	A*A*A*
Distinction	144	AAA
Merit	120	BBB
Pass	96	CCC
Pass (D or E on the core)	72	DDD

BTEC							
Extended Diploma	UCAS Points	Diploma	UCAS Points	Foundation Diploma	UCAS Points	Extended Certificate	UCAS Points
D*D*D*	168	D*D*	112	D*	84	D*	56
D*D*D	160	D*D	104	D	72	D	48
D*DD	152	DD	96	M	48	M	32
DDD	144	DM	80	P	24	P	16
DDM	128	MM	64	—	—	—	—
DMM	112	MP	48	—	—	—	—
MMM	96	PP	32	—	—	—	—
MMP	80	—	—	—	—	—	—
MPP	64	—	—	—	—	—	—
PPP	48	—	—	—	—	—	—

UAL Extended Diploma	UCAS Points	A Level Equivalent
D	168	A*A*A*
M	120	BBB
P	72	DDD

A UAL Extended Diploma qualification has the same value as three A Levels and is widely recognised by employers and universities, meeting the entry requirements for all Art, Design and Media degree courses.

Key: P = Pass M = Merit D = Distinction D* = Distinction Star

Access to HE

Lincoln College's Access to Higher Education (HE) Diplomas are designed to support adult learners in their progression to a wide range of degrees.

We work closely with Higher Education institutions, including our own degree provision, to ensure students are equipped with the skills they need for further study.

There is no upper age limit and so is suitable for adults who have been out of education for a while or who wish to change career direction and need a degree.

Each Diploma is designed to fit alongside family and employment commitments so that adults can fully engage and obtain the Level 3 qualification needed to progress to degree level study.

Pathways and subject options support progression to a variety of degrees.

The one-year Diplomas are the equivalent UCAS points as three A Levels.

All subjects studied have Higher Education study skills embedded in the learning, developing academic writing, research skills, referencing, presentation skills and report writing.

Full support in applying to Higher Education through the UCAS process is also provided.

The majority of students apply for an Advanced Learner Loan to pay their tuition fees. This loan is waived on completion of an undergraduate degree for those who have obtained an Access to HE Diploma.

Access Pathways

- Access to HE Business
- Access to HE Criminal Justice & Policing Studies
- Access to HE Education (Teacher Training)
- Access to HE Health Professions
- Access to HE Humanities & Social Science
- Access to HE Science



To find out more, visit:
www.lincolncollege.ac.uk/access-to-he



Lincolnshire Institute of Technology (IoT)

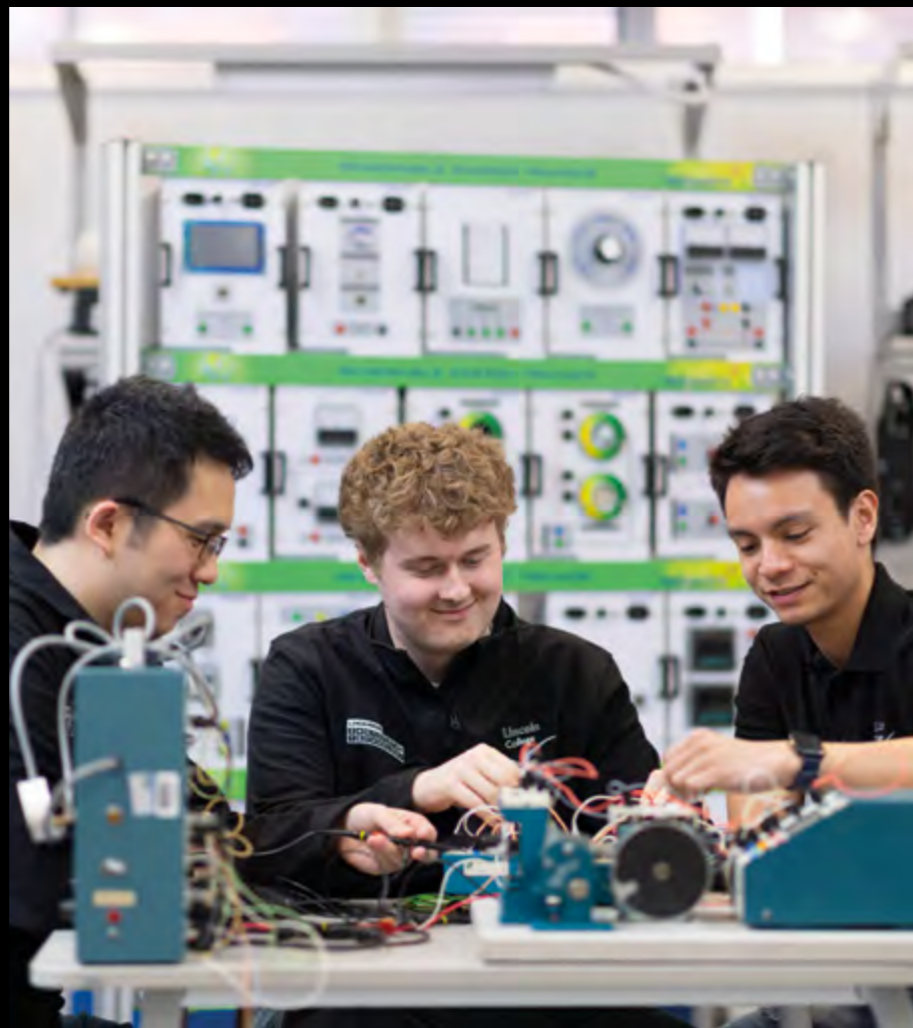
Supporting Technical Skills Development in Lincolnshire

The Institutes of Technology (IoT) have been formed across England to enhance the career and employment chances of young people and adults.

The programmes that have been created at the institutes have been designed in collaboration with employers, colleges, and universities to ensure students are work-ready and to offer clear career progression.

At the Lincolnshire Institute of Technology, our aim is to develop the talent and skills to drive exciting new age industries and play a role in enabling a dynamic, technology-driven economy.

We have a range of Level 4, 5 and 6 courses covering four IoT pathways - Automotive Engineering, Digital Technologies, Electrical and Mechanical Engineering and Construction and Civil Engineering.



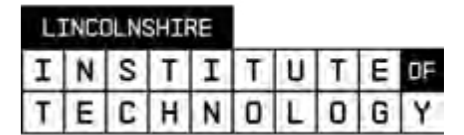
Purpose-built facilities at Lincoln College

A multi-million-pound investment has been made to refurbish our oldest Grade II listed building, Gibney, to house the IoT.

It has been designed to replicate the latest progressive working environments.

We have also equipped all our workshops and classrooms with the latest IT hardware, computing, electrical engineering and automotive engineering equipment.

More information on the Lincolnshire IoT, including videos and a virtual tour of the Gibney building, can be found on our website: www.lincolncollege.ac.uk/iot





An education that
knows no bounds

Air and Space Institute (ASI) reaches new heights with Nottingham Trent University partnership

ASI launched in 2021 with the first intake studying programmes designed for future civil aviation and military pilots, aircraft engineers and ground crew.

Students have the opportunity to benefit from one of the most extensive enrichment programmes in the UK and from September 2023, students can continue their studies beyond Level 3 at the Institute to undertake a Higher Education Level 4 HNC qualification, progressing to a Level 5 HND, in either Aeronautical Engineering or International Travel and Tourism Management.

The partnership with Nottingham Trent University (NTU) allows ASI students the chance to complete top-up degrees delivered by NTU after finishing their Level 5 studies.

Thanks to this, students completing the top-up degrees (subject to validation) will achieve a full Level 6 bachelor's degree.

For more information on the courses available, please visit the ASI website or scan the QR code: www.asi-newark.co.uk/higher-education



Course Index

40

BSc (Hons)
Applied Animal Management ^(Top-Up)

42

HNC
Business

44

BSc (Hons)
Clinical Herbalism

52

CertHE
Computer Automation and
Internet of Things Development

54

BSc (Hons)
Computer Science

56

HNC
Civil Engineering

64

HND
Construction and the Built
Environment (Construction
Management)

66

CertHE
Digital Learning Design

68

CertED
Education Training and Skills

76

BSc (Hons)
Electrical Engineering
(Control and Network
Connected Devices)

78

BSc (Hons)
Electrical Engineering
(Production Automation)

80

BSc (Hons)
Electrical Engineering
(Sustainable Energy)

88

DipHE
Mobile, Web, Virtual and
Streaming Technologies

90

BA (Hons)
Musical Instrument Craft
(Guitar Making and Repair)

92

BA (Hons)
Musical Instrument Craft
(Piano Tuning and Restoration)

100

BA (Hons)
Social Science

102

BA (Hons)
Social Science
(Criminology and Law)

104

(FdSc)
Sports Coaching, Education
and Development

34

HNC
Aeronautical Engineering

36

HND
Aeronautical Engineering

38

(FdSc)
Applied Animal Management

46

BA (Hons)
Commercial Photography
and Digital Media

48

DipHE
Complementary Healthcare
and Wellbeing

50

CertHE
Complementary
Studies (Herbalism)

58

HND
Construction and the Built
Environment (Civil Engineering)

60

HNC
Construction Management for
England (Construction Design and
Build Technician)

62

HNC
Construction Management for
England (Construction Site
Supervisor)

70

PGDE
Education Training and Skills

72

HNC
Electrical and
Electronic Engineering

74

HND
Engineering

82

HNC
International Travel and
Tourism Management

84

HND
International Travel and
Tourism Management (Aviation)

86

HNC
Mechanical Engineering

94

BA (Hons)
Musical Instrument Craft
(Violin Making and Repair)

96

BA (Hons)
Musical Instrument Craft
(Woodwind Making and Repair)

98

BA (Hons)
Professional Policing

106

BSc (Hons)
Sports Coaching, Education
and Development ^(Top-Up)

108

(FdSc)
Sports Therapy

110

BSc (Hons)
Sports Therapy ^(Top-Up)

Aeronautical Engineering

The HNC Aeronautical Engineering programme is ideal for students wishing to work within the aviation industry. Students firstly study the HNC Aeronautical Engineering and then have the option to progress to the HND Level 5 course.

Designed to help students build technical knowledge and skills, our course focuses on the underlying principles of aeronautical engineering. Students have the opportunity to develop the skills to recognise and alleviate risk, create a safe and efficient operating environment, and assess vital information. With a focus on the future, students can also build transferable skills and learn about the decision-making methods used by industry.

Our aeronautical engineering students will be based in our aviation and engineering classrooms, workshops and emulation zone that keep teaching and learning space with cutting-edge innovation and discovery including the use of virtual reality technologies and a flight simulator.

We have a strong focus on employability and our training partners and professional connections can give students the chance to immerse themselves in the industry. Our close proximity to East Midlands Airport, along with other regional aviation partners, means students have the opportunity for networking, seasonal jobs and work placements where available.

At ASI Newark, students learn from skilled lecturers who have a high level of working knowledge, based on industry experience. Their teaching is designed to enable students to gain a deep insight into the latest trends and requirements of the aerospace and aviation sector.

As well as receiving interesting lectures and seminars, students are also supported by personal tutors, module leaders and course leaders.

In addition, guest speakers often deliver sessions for students within ASI to enrich their learning. Previously we have welcomed speakers from Jet2, British Airways, EasyJet and East Midlands Airport.

As part of the programme, students can choose to take an optional structured pilot training programme delivered by external partners at an additional cost that could lead to a Private Pilot Licence (PPL). Details will be available once enrolled on the course.

Modules may include:

- Engineering Design
- Engineering Maths
- Engineering Science
- Managing a Professional Engineering Project (Pearson set)
- Aircraft Aerodynamics
- Aircraft Electrical Power and Distribution Systems
- Airframe Mechanical Systems/ Industrial Robots
- Composite Materials for Aerospace Applications

Progression:

The HNC is a qualification which is widely recognised in its own right and is designed to provide students with the skills required for employment in a range of associated professions. On successful completion of the course students may apply to continue at the College to study the HND Aeronautical Engineering.



Level

Level 4

Duration

1 year full-time
2 years part-time

UCAS Institution Code

L42

UCAS Course Code

H410

Campus

Newark

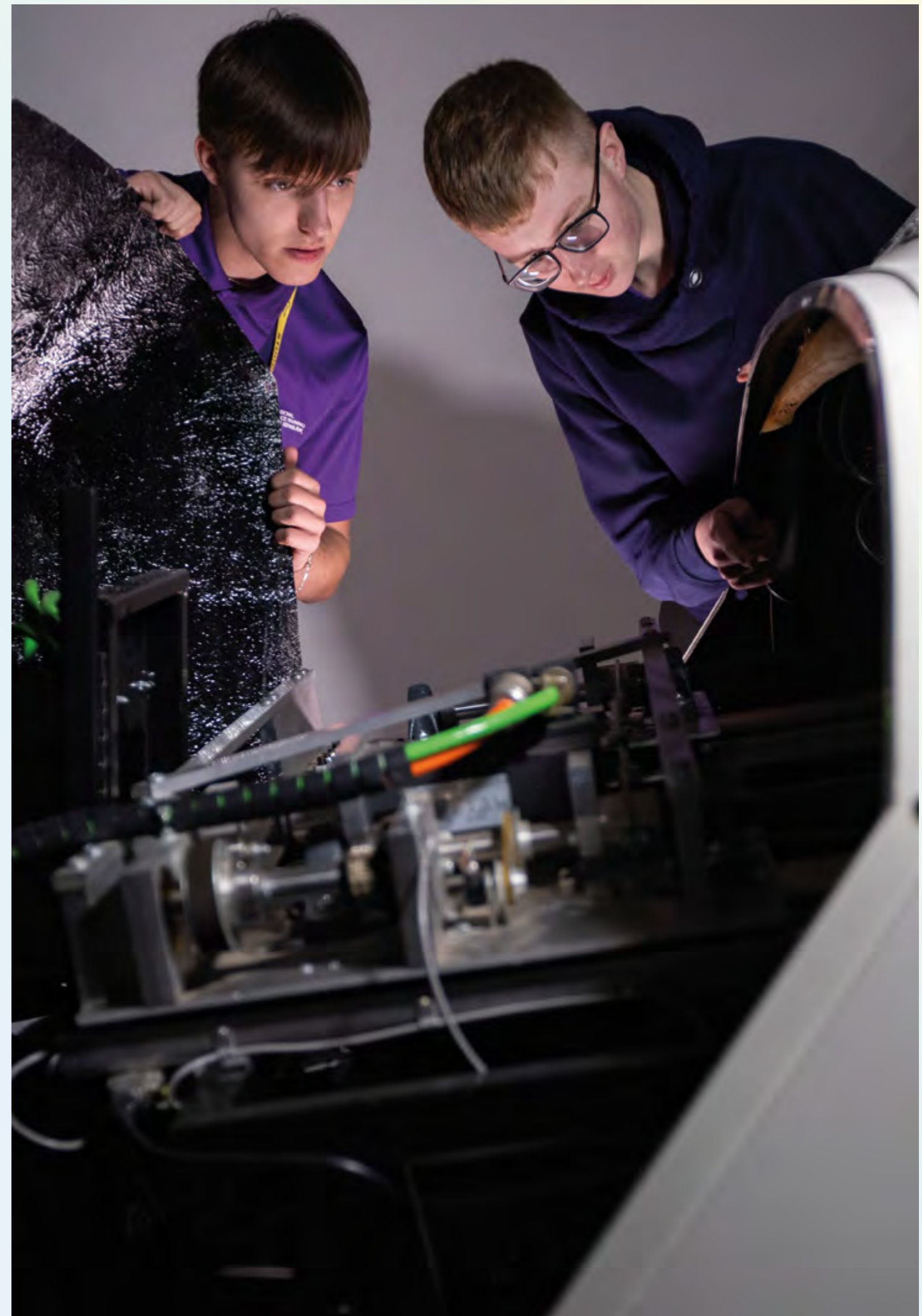
Entry Requirements

A minimum of 48 UCAS Tariff points from A Level, BTEC or equivalent qualifications. Plus: GCSE English and Maths - Grade C/4 or above. Please see our website for subject-specific requirements.

Validated By



www.lincolncollege.ac.uk/hnc-aeronautical
Call: 030 030 32435



Aeronautical Engineering

The HND Aeronautical Engineering programme is ideal for students wishing to work within the aviation industry. Students firstly study the HNC Aeronautical Engineering and then have the option to progress to the HND.

Designed to help students build technical knowledge and skills, our course focuses on the underlying principles of aeronautical engineering. Students can develop the skills to recognise and alleviate risk, create a safe and efficient operating environment, and assess vital information. With a focus on the future, students can also build transferable skills and learn about the decision-making methods used by industry.

The Pearson BTEC Higher National Diploma (HND) is at Level 5 (the same as the first and second year of a UK honours degree). It is a seven-unit qualification which involves studying four mandatory core subjects and a further three specialist subjects. The units have been selected to meet a broad range of local industry needs.

Our aeronautical engineering students will be based in our aviation and engineering classrooms, workshops and emulation zone that keep teaching and learning apace with cutting-edge innovation and discovery including the use of virtual reality technologies and a flight simulator.

As part of the programme, students can choose to take an optional structured pilot training programme delivered by external partners at an additional cost that could lead to a Private Pilot Licence (PPL). Details will be available once enrolled on the course.

Modules may include:

- Research Project
- Professional Engineering Management (Pearson-set)
- Further Mathematics
- Aircraft Flight Control Systems
- Aircraft Propulsion Principles and Technology
- Avionic Systems
- Advanced Composite Materials for Aerospace Applications

Progression:

HNC and HND qualifications are widely recognised in their own right and provide students with the skills required for employment in a range of associated professions. On successful completion of the course students may top-up to degree level with our partner institution, Nottingham Trent University (*subject to validation).



Level

Level 5

Duration

1 year full-time
2 years part-time

UCAS Institution Code

L42

UCAS Course Code

H410

Campus

Lincoln

Entry Requirements

HNC Qualification in Aeronautical Engineering and GCSE English and Maths at Grade C/4 or above. Please see our website for subject-specific requirements.

Validated By



www.lincolncollege.ac.uk/hnd-aeronautical
Call: 030 030 32435



Applied Animal Management

The FdSc Applied Animal Management programme is designed to reflect ongoing developments within the animal industry including the use of working animals within society, the need to protect and enhance the habitats and populations of animal species as well as the importance of enhancing animal health and welfare through the use of evidence-driven practice provided by the work of a broad range of animal manual therapists.

Competent practical animal husbandry and handling/restraint skills, within the industry as a whole, are paramount and as such the course enables students to work with a range of domestic, farm, exotic and wildlife species, within industry environments.

This provides students with valuable experience for gaining insight into the different sectors of the industry, observing differences within practice (including specialist equipment use) and networking for future volunteering and career opportunities.

Modules may include (Year 1):

- Comparative Anatomy & Physiology
- Animal Health & Disease
- Comparative Animal Nutrition
- Animal Husbandry & Collection Management
- Animal Behaviour & Welfare
- Study Skills & Biological Principles

Modules may include (Year 2):

- Evolution & Ecology
- Animals in Society
- Animal Cognition & Training
- Wildlife Management, Rescue & Rehabilitation
- Introduction to Animal Physical Therapies
- Research Methods & Project

Progression:

On successful completion of this course, students may progress onto the Applied Animal Management Top-Up degree at Lincoln College.



Level
Level 5

Duration
2 years full-time
3 years part-time

UCAS Institution Code
L42

UCAS Course Code
D320

Campus
Lincoln

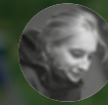
Entry Requirements
A minimum of 64 UCAS points from A Level, BTEC or equivalent qualifications. Please see our website for subject-specific requirements.

Validated By



www.lincolncollege.ac.uk/fdsc-applied-animal
Call: 030 030 32435

“As part of our course, we have frequent practical days at White Post Farm, Wolds Wildlife Park and other relevant organisations. Being able to go out on these trips is extremely helpful, not only for our current studies and assignments, but also for our future employment.”



Karolina
FdSc Applied Animal Management



Applied Animal Management (Top-Up)

The BSc (Hons) Applied Animal Management (Top-Up) degree programme is designed to reflect ongoing developments within the animal industry including the use of working animals within society, the need to protect and enhance the habitats and populations of animal species as well as the importance of enhancing animal health and welfare through the use of evidence-driven practice provided by the work of a broad range of animal care practitioners.

The programme is designed to enable students who have already completed a sub-degree (eg. HND or Foundation Degree) within this subject area to continue their studies on to Honours Degree level.

Alongside theory, student learning is enhanced by practical observations and discussions with a range of local practitioners.

Modules may include:

- Animal Conservation and Breeding
- Modalities of Animal Therapy
- Animal Assisted Interventions
- Current Issues in Animal Sciences
- Dissertation

Progression:

On successful completion of this course, graduates may progress to employment or postgraduate study at an alternative institution.



Level

Level 6

Duration

1 year full-time
2 years part-time

UCAS Institution Code

L42

UCAS Course Code

D390

Campus

Lincoln

Entry Requirements

A minimum of 120 credits from Level 5 study in a related discipline. Plus: GCSE English and Maths - Grade C/4 or above. Please see our website for subject-specific requirements.

Validated By



UNIVERSITY OF HULL



[www.lincolncollege.ac.uk/
bsc-applied-animal](http://www.lincolncollege.ac.uk/bsc-applied-animal)
Call: 030 030 32435



Business

The HNC Business programme provides students with a wide range of opportunities and practical preparation for working within a business context.

The course has a strong vocational focus and aims for students to develop the skills and techniques to support their progression into industry. It has been designed to embrace the ever-changing nature of the modern business environment and will include modules of Business Environment, Marketing, HR, Leadership and Management, Accounting and Business Projects.

The mix of theory and practice enables students to apply what they have learned to real industry situations, improving their employment prospects and work-related experience.

Modules may include:

- Business and the Business Environment
- Marketing Processes and Planning
- Human Resource Management
- Leadership and Management
- Accounting Principles
- Managing a Successful Business Project
- Entrepreneurial Ventures
- Digital Business in Practice

Progression:

The HNC is a qualification which is widely recognised in its own right and is designed to provide students with the skills required for employment in a range of associated professions. On successful completion of the course students may apply to continue to study a HND in Business or enter employment.

Level

Level 4

Duration

1 year full-time
2 years part-time

UCAS Institution Code

L42

UCAS Course Code

N190

Campus

Lincoln

Entry Requirements

A minimum of 48 UCAS points from A Level, BTEC or equivalent qualifications. Please see our website for subject-specific requirements.

Validated By



www.lincolncollege.ac.uk/hnc-business

Call: 030 030 32435



BSc (Hons)

Clinical Herbalism

The BSc (Hons) Clinical Herbalism degree programme provides a comprehensive education and training in the principles and practice of clinical herbalism.

This incorporates the 'energetic' understanding of the cause of illness and the therapeutic actions of medicinal plants as well as the orthodox disciplines of Anatomy, Physiology, Pathophysiology and Nutrition. It is integrative in approach, linking traditional herbal medicine with modern science and holism.

Our teaching methods include a rich mixture of theoretical study, reflection, the use of intuition and practical experience including professional practice in our on-site Complementary Medicine Clinic.

The course is delivered by block learning, which means that the attendance requirements for the academic modules are met through eight full three day weekends per year, plus attendance at the Complementary Medicine Clinic for clinical training.

Year One of the course requires 90 hours of clinical training, (achieved during term time, either one day per fortnight or in blocks).

Year Two requires 190 hours and Year Three requires 210 hours (roughly one day per week or the equivalent). There are a variety of ways in which this attendance can be achieved.

The course is accredited by the EHTPA (the European Herbal and Traditional Practitioners Association) and graduates are eligible to become

members of NIMH (the National Institute of Medical Herbalists) or other professional bodies of medical herbalists.

Modules may include:

- Marketing Principles
- Clinical Practice
- Introduction to Herbal Medicine
- Anatomy & Physiology for Herbal Medicine
- Pharmacy & Community Practice
- History, Philosophy & Evidence
- Herbal Therapeutics
- Nutrition as Therapy
- Pathophysiology
- Research Methods
- Advanced Herbal Therapeutics
- Preparation for Practice
- Independent Study (Individual research project)

Progression:

The successful completion of BSc (Hons) Clinical Herbalism provides graduates with the qualifications that may enable them to set up in professional practice as an herbal medicine practitioner. There may also be broader employment opportunities in the health and manufacturing industries and opportunities to progress to postgraduate study.



Level

Level 6

Duration

3 years full-time
5 or 6 years part-time

UCAS Institution Code

L42

UCAS Course Code

B342

Campus

Lincoln

Entry Requirements

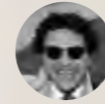
A minimum of 72 UCAS points from A Level, BTEC or equivalent qualifications. Please see our website for subject-specific requirements.

Validated By



www.lincolncollege.ac.uk/bsc-hons-clinical-herbalism
Call: 030 030 32435

"I would encourage anyone interested in natural medicine to join the course. You get a wealth of experience with patients, and it's a rewarding experience"



Giuseppe Di Carlo
BSc (Hons) Clinical Herbalism



Commercial Photography and Digital Media

The BA (Hons) Commercial Photography and Digital Media degree programme emphasises the creative use of photography and other lens based media across a wide range of subject areas and applications.

The course encourages the exploration of contemporary practice and includes critical and contextual modules. Traditional techniques and practices are investigated alongside digital practice and output.

This is a visual communication course structured to provide a route into employment in creative media, photography and associated industries. Individual project briefs are designed to enable learners to achieve their full potential using technical and critical skills relevant to their specific pathways.

The BA helps prepare learners for a career in the creative industry, through the development of creative skills, technical and professional expertise.

Modules may include:

- Historical and Contextual Studies
- Brand Identity and Design
- Digital Workshop Practice
- Fashion Photography
- Advertising Imaging & Output
- Final Major Project

Progression:

Graduates from this programme could enter into a wide range of careers within the creative industries including roles such as film making and production, TV broadcasting and freelance photography. Graduates may also progress to further study at postgraduate level.

Level

Level 6

Duration

3 years full-time

UCAS Institution Code

L42

UCAS Course Code

W640

Campus

Christ's Hospital Terrace

Entry Requirements

A minimum of 72 UCAS points from A Level, BTEC or equivalent qualifications. Please see our website for subject-specific requirements.

Validated By

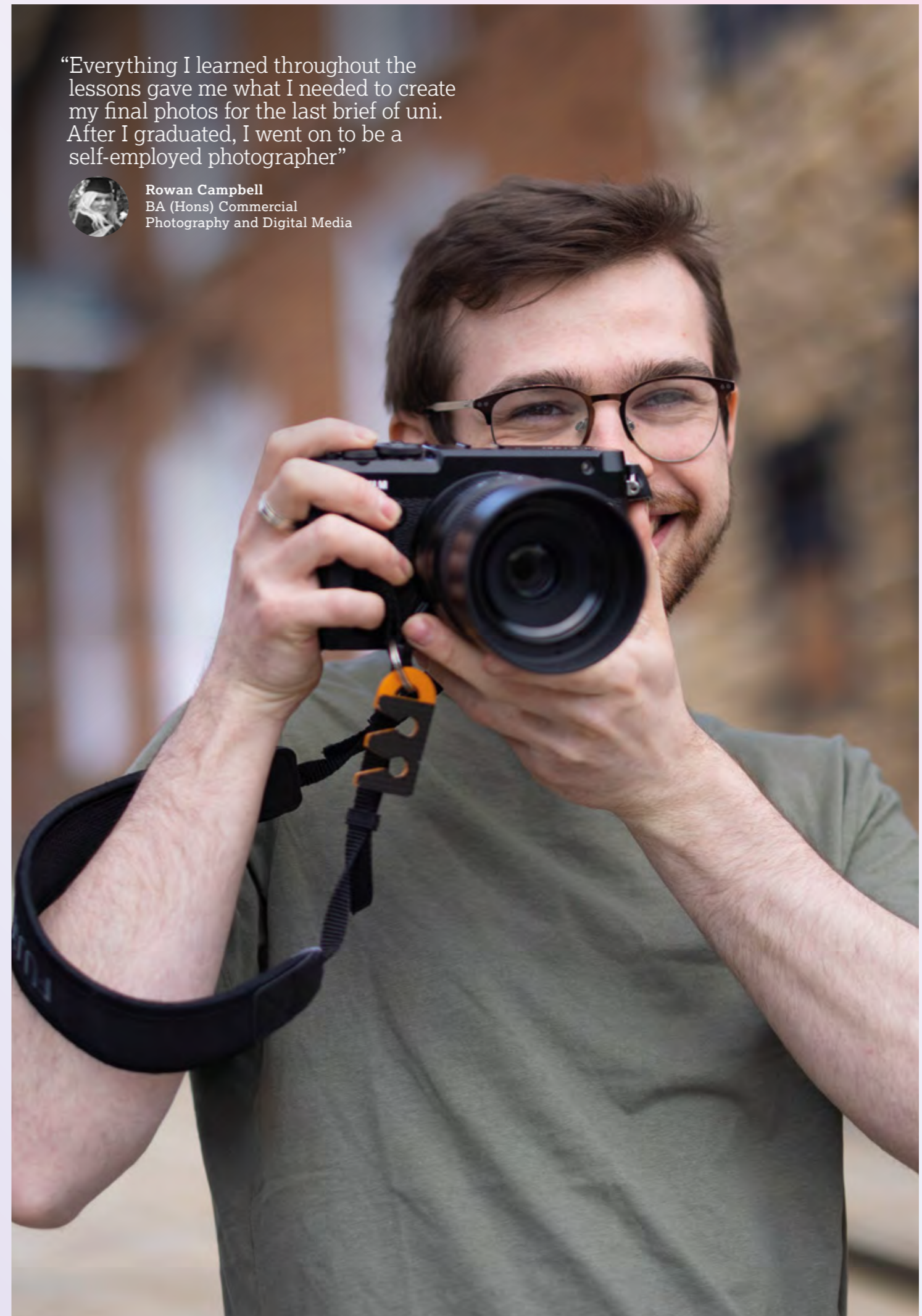


www.lincolncollege.ac.uk/ba-hons-photography
Call: 030 030 32435

“Everything I learned throughout the lessons gave me what I needed to create my final photos for the last brief of uni. After I graduated, I went on to be a self-employed photographer”



Rowan Campbell
BA (Hons) Commercial
Photography and Digital Media



Complementary Healthcare and Wellbeing

The DipHE Complementary Healthcare and Wellbeing programme aims to provide learners wishing to undertake studies within complementary therapies with a deeper, broader, and enriched learning experience - supporting career development into this ever growing and expanding industry.

This course incorporates and links to the current healthcare and wellbeing initiatives, along with the growing developments and changes within the healthcare sector, NHS needs and patient choice whilst ensuring the skills, techniques and essential knowledge allow for both private and public sector career opportunities.

Graduates may progress to working in corporate settings, the NHS, within specialist areas such as palliative care, midwifery, integrated healthcare practices and private clinics.

Modules may include:

- Principles and Practices of Complementary Therapies
- Anatomy, Physiology and Pathology
- Interpersonal Skills and Professional Ethics
- Clinical Practice
- Integrated Healthcare and Wellbeing Development
- Fundamental Research and Study Skills

- Business and Marketing
- Advanced Clinical Practice
- Complementary Therapies in Specialist Settings
- Research Project
- Nutrition as Therapy

Assessments may include a combination of strategies from essays, written exams and practical formative and summative assessment. There may also be a requirement to collate a clinical portfolio made up of reflective practice, case study reports and formative assessment feedback that will support professional progression, ensuring that students cover a wide range of client objectives, types, and techniques.

Progression:

Graduates may progress into employment within a healthcare setting or onto a BSc degree course.



Level
Level 5

Duration
2 years full-time
4 years part-time

UCAS Institution Code
L42

UCAS Course Code
B300

Campus
Lincoln

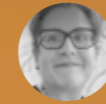
Entry Requirements
A minimum of 48 UCAS points from A Level, BTEC or equivalent qualifications. Plus: GCSE English and Maths - Grade C/4 or above. Please see our website for subject-specific requirements.

Validated By



www.lincolncollege.ac.uk/diphe-complementary-healthcare
Call: 030 030 32435

“I chose Lincoln College as it is fairly local to me. I was a stay-at-home mum and so this course is perfect because it has given me something for me and that I can have my own business with afterwards”



Karen Howard
DipHE Complementary Healthcare and Wellbeing



Complementary Studies (Herbalism)

The CertHE Complementary Studies (Herbalism) programme provides a comprehensive foundation education and training in the principles and practice of clinical herbalism.

This incorporates the 'energetic' understanding of the cause of illness and the therapeutic actions of medicinal plants as well as the orthodox disciplines of Anatomy and Physiology.

It is integrative in approach, linking traditional herbal medicine with modern science and holism.

Our teaching methods include a rich mixture of theoretical study, reflection, the use of intuition and practical experience including professional practice in our on-site Complementary Medicine Clinic.

Our aim is to enable students to progress to the full degree to become a competent and confident practitioner of clinical herbalism.

The course is delivered by block learning, which means that the attendance requirements for the academic modules are met through eight full three day weekends plus attendance at the Complementary Medicine Clinic for clinical training.

The course requires 90 hours of clinical training, (achieved during term time, either one day per fortnight or in blocks).

The course is accredited by the EHTPA (the European Herbal and Traditional Practitioners Association).

Modules may include:

- Clinical Practice 1
- Anatomy and Physiology for Herbal Medicine
- Herbal Therapeutics 1
- Pharmacy and Community Practice
- History, Philosophy and Evidence

Progression:

Successful completion of this Level 4 programme provides a natural progression to the BSc (Hons) Clinical Herbalism degree.



Level

Level 4

Duration

1 year full-time
2 years part-time

UCAS Institution Code

L42

UCAS Course Code

B390

Campus

Lincoln

Entry Requirements

A minimum of 72 UCAS points from A Level, BTEC or equivalent qualifications. Please see our website for subject-specific requirements.

Validated By



www.lincolncollege.ac.uk/certhe-complementary-studies-herbalism

Call: 030 030 32435



Computer Automation and Internet of Things Development

The CertHE Computer Automation and Internet of Things Development programme is the ideal introduction to the complex and exciting world of computer control and Internet of Things development.

The programme is designed to provide post Further Education learners, existing software developers and electronics engineers with the fundamental skills to work in an industry that combines software engineering, electronics engineering and networking skills to develop electronic control and monitoring devices for industrial and home environments.

Modules may include:

- Introduction to Programming
- Fundamentals of Data Acquisition Systems
- Networking and Software Security
- HCI and User Interface Design
- Analog and Digital Techniques
- Cloud Services and Security

Progression:

This programme has been designed to provide a route into employment within the industries of Computer Engineering and Electronics for aspiring computing or electronics students who want to upskill in the growing field of the Internet of Things and technologies that underpin it. Successfully completing the qualification may lead to job roles such as junior IoT software developer, junior IoT hardware developer, IoT infrastructure engineer or IoT solutions advisor.



Level

Level 4

Duration

1 year full-time
2 years part-time

UCAS Institution Code

L42

UCAS Course Code

I900

Campus

Lincoln

Entry Requirements

A minimum of 64 UCAS points from A Level, BTEC or equivalent qualifications. Please see our website for subject-specific requirements.

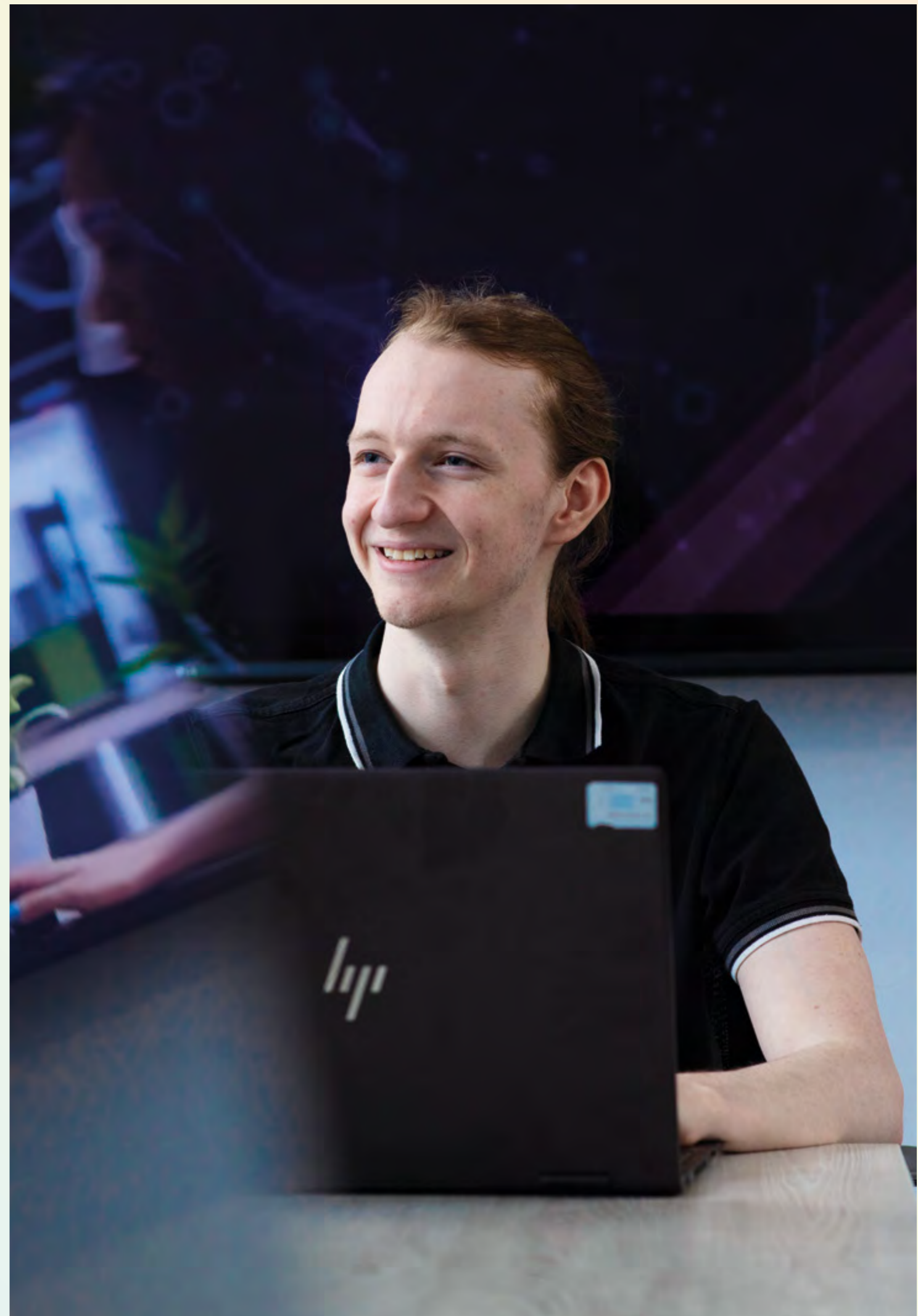
Validated By



UNIVERSITY OF HULL



www.lincolncollege.ac.uk/certhe-computer-automation
Call: 030 030 32435



BSc (Hons)

Computer Science

The BSc (Hons) in Computer Science provides learners with a gateway to employment within the computing industry; it is aimed at providing the fundamental skills for a broad range of roles.

This qualification is designed to equip students with the knowledge, understanding and skills required to enhance their career potential in the computing and IT profession. The course is aimed mainly, but not exclusively, at those who have some computing experience.

Modules may include:

- Computer Systems
- Introduction to Programming
- Programming and Software Quality Assurance
- Maths for Computing
- Client Side Web Development
- Professional Skills and Ethics
- Object Oriented Programming
- Server Side Web Development
- Database Principles and Technologies
- Network Systems
- HCI and User Interface Design
- Group Project
- Computing Project (Dissertation)
- Mobile Application Development
- Artificial Intelligence
- Cloud and Distributed Computing
- Employability and Entrepreneurship

Progression:

On successful completion of this course, graduates may pursue a career within the computing and IT industry. Our aim is to provide graduates with the capability to adapt and respond to the changing and diverse nature of the sector. Graduates could also complete postgraduate courses at an alternative institution or pursue a teacher training qualification.



Level

Level 6

Duration

3 years full-time
6 years part-time

UCAS Institution Code

L42

UCAS Course Code

I100

Campus

Lincoln

Entry Requirements

A minimum of 64 UCAS points from A Level, BTEC or equivalent qualifications. Please see our website for subject-specific requirements.

Validated By



[www.lincolncollege.ac.uk/
bsc-hons-computer-science](http://www.lincolncollege.ac.uk/bsc-hons-computer-science)
Call: 030 030 32435



“I had offers from a few other universities but the staff and the quality of learning I would get by having the smaller group sizes at Lincoln College appealed more to me”



Thomas Hughes
BSc (Hons) Computer Science

Civil Engineering

The HNC Civil Engineering programme is a vocational qualification designed to offer students practical experience in the typical tasks and requirements of engineering professionals and the underpinning academic knowledge.

Through both practical and theoretical sessions, students have the opportunity to develop the hands-on skills that are essential for successful employment within the sector. Assignments are vocational in nature and students are encouraged to apply their knowledge in the most relevant way to their current employment or aspirational job role. A number of off-site visits are undertaken throughout the course to support the theoretical principles and practices delivered.

Modules may include:

- Construction Design Project
- The Construction Environment
- Science & Materials
- Mathematics for Construction
- Civil Engineering Technology
- Principles of Structural Design
- Surveying, Measuring & Setting-out
- Geotechnics & Soil Mechanics

Progression:

The HNC is a qualification which is widely recognised in its own right and is designed to provide students with the required skills for employment in a range of associated professions. On successful completion of the course students may apply to continue at the College to study HND Construction and The Built Environment (Civil Engineering).



Level

Level 4

Duration

2 years part-time

Campus

Lincoln

Entry Requirements

A minimum of 48 UCAS points from A Level, BTEC or equivalent qualifications. GCSE English and Maths at Grade C/4 or above. Please see our website for subject-specific requirements.

Validated By



www.lincolncollege.ac.uk/hnc-civil

Call: 030 030 32435



Construction and the Built Environment (Civil Engineering)

The HND Construction and The Built Environment (Civil Engineering) programme is a vocational qualification that is designed to offer students practical experience in the typical tasks and requirements of engineering professionals and the underpinning academic knowledge.

The course is available as a two-year part-time Level 5 programme designed for students who have experience of, or work in, the civil engineering industry and have ambitions of working in this area from a professional, managerial, or technical capacity.

The course builds on the knowledge and skills studied in the HNC and covers subjects such as: fluid mechanics and technology, modern methods of construction, highways, health and safety in construction, mathematics, structural analysis, and a group project.

Students have the opportunity to gain contemporary vocational skills including study, research, analysis, planning and organisational skills, as well as the responsibility for their own learning, ability to be flexible and to work co-operatively with others.

Modules may include:

- Contractual Procedures and Procurement
- Project Management
- Advanced Civil Engineering
- Transportation
- Personal and Professional Development
- Research Project

Progression:

HND qualifications are widely recognised in their own right and provide students with the opportunity to develop the skills required for employment in a range of civil engineering professions. On successful completion of the course students may top up to degree level at an alternative institution.



Level

Level 5

Duration

2 years part-time

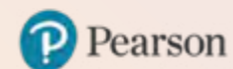
Campus

Lincoln

Entry Requirements

A HNC qualification in Civil Engineering. Please see our website for subject-specific requirements.

Validated By



www.lincolncollege.ac.uk/hnd-construction-civil
Call: 030 030 32435



Construction Management for England (Construction Design and Build Technician)

The HNC Construction Management for England (Construction Design and Build Technician) (HTQ) programme is a vocational qualification designed to offer students practical experience in the typical tasks and requirements of construction professionals and the underpinning academic knowledge.

Students have the opportunity to gain a wide range of construction knowledge linked to practical skills gained through research, independent study, directed study and workplace scenarios. Students are involved in vocational activities that help them to develop behaviours (attitudes and approaches) and transferable skills. Transferable skills are those such as communication, teamwork, research and analysis, which are highly valued in Higher Education and in the workplace.

Modules may include:

- Construction Design Project
- The Construction Environment
- Construction Technology
- Legal and Statutory Requirements in Construction
- Digital Applications for Construction Information
- Financial Management & Business Practices in Construction
- Tender & Procurement
- Building Information Modelling

Progression:

The HNC is a qualification which is widely recognised in its own right and is designed to provide students with the skills required for employment in a range of associated professions. On successful completion of the course students may apply to continue at the College to study HND Construction and The Built Environment (Construction Management).



Level

Level 4

Duration

2 years part-time

Campus

Lincoln

Entry Requirements

A minimum of 48 UCAS points from A Level, BTEC or equivalent qualifications. GCSE English and Maths at Grade C/4 or above. Please see our website for subject-specific requirements.

Validated By



www.lincolncollege.ac.uk/hnc-construction-design
Call: 030 030 32435



Construction Management for England (Construction Site Supervisor)

The HNC Construction Management for England (Construction Site Supervisor) (HTQ) programme is a vocational qualification designed to offer students practical experience in the typical tasks and requirements of construction professionals and the underpinning academic knowledge.

Students have the opportunity to gain a wide range of construction knowledge linked to practical skills gained through research, independent study, directed study and workplace scenarios. Students are involved in vocational activities that help them to develop behaviours (attitudes and approaches) and transferable skills. Transferable skills are those such as communication, teamwork, research and analysis, which are highly valued in Higher Education and in the workplace.

Modules may include:

- Construction Design Project
- The Construction Environment
- Construction Technology
- Legal and Statutory Requirements in Construction
- Digital Applications for Construction Information
- Surveying, Measuring & Setting out
- Tender & Procurement
- Site Supervision & Operations

Progression:

The HNC is a qualification and is widely recognised in its own right is designed to provide students with the skills required for employment in a range of associated professions. On successful completion of the course students may apply to continue at the College to study HND Construction and The Built Environment (Construction Management).



Level

Level 4

Duration

2 years part-time

Campus

Lincoln

Entry Requirements

A minimum of 48 UCAS points from A Level, BTEC or equivalent qualifications. GCSE English and Maths at Grade C/4 or above. Please see our website for subject-specific requirements.

Validated By



www.lincolncollege.ac.uk/hnc-construction-site
Call: 030 030 32435



Construction and the Built Environment (Construction Management)

The HND Construction and the Built Environment (Construction Management) programme is a vocational qualification that can help students to develop a good understanding of the leadership roles in management and execution of the construction process.

The programme is available as a two-year part-time Level 5 programme designed for students who have experience of, or work in, the construction industry and have ambitions of working in this area from a professional, managerial, or technical capacity.

The course aims to build upon learners' skills in site management, contracts and management and Building Information Modelling (BIM), sustainability and the management of complex buildings.

Students have the opportunity to study key areas such as construction-based law, alternative modern methods of construction (AMCs), site safety and in addition to site management techniques, they can also learn about contract procedures, project management and the construction risk assessment process.

Modules may include:

- Contracts and Management
- Project Management
- Maintenance and Operations
- Environmental Assessment

Progression:

HND qualifications are widely recognised in their own right and provide students with the opportunity to develop the skills required for employment in a range of construction professions. On successful completion of the course students may top up to degree level at an alternative institution.



Level

Level 5

Duration

2 years part-time

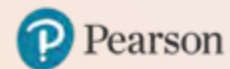
Campus

Lincoln

Entry Requirements

A HNC qualification in Construction Management. Please see our website for subject-specific requirements.

Validated By



www.lincolncollege.ac.uk/hnd-construction
Call: 030 030 32435



Digital Learning Design

The CertHE Digital Learning Design programme offers students the opportunity to learn and create engaging and effective online and blended delivery courses for use in schools, Further and Higher Education sectors, within businesses, training organisations and by individual content authors.

The programme contains modules of study providing discrete digital and planning skills that, when combined with the course project, allow the creation of a fully formed digital course.

Assessment activities focus on producing tangible outputs that can be of significant practical value in real world education and training situations.

Modules may include:

- Digital Authoring
- 21st Century Learning Design Principles
- Principles of Online Pedagogy
- Project

Coursework and project-style tasks may make up a large proportion of the assessments. Assessment tasks and learning outcomes will also be mapped to evidence the progression from one module to the next, enabling students to track their own progress and development.

Progression:

Completion of this Level 4 course will naturally complement and support a teacher's further professional and academic development. Alongside opening opportunities to pursue professional specialisations within the field of digital learning design, the practical and theoretical skills that students have the opportunity to develop during this course will amply support them in any further Level 5 or above qualifications in education and teaching.



Level

Level 4

Duration

2 years part-time

UCAS Institution Code

L42

UCAS Course Code

X990

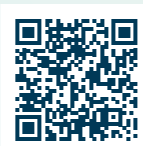
Campus

Lincoln

Entry Requirements

Currently in a teaching, assessing, or teaching-adjacent support role. Plus: GCSE English and GCSE Maths - Grade C/4 or above. Please see our website for subject-specific requirements.

Validated By



www.lincolncollege.ac.uk/certhe-digital-learning
Call: 030 030 32435



Education Training and Skills*

The CertEd Education Training and Skills programme offers education and development to practising or aspiring teachers and trainers in the education, training and skills sector such as Further Education (FE) colleges, private sector training providers and the criminal justice system (offender learning/prison education).

This programme aims to develop learners with the knowledge and understanding of the principles and practice of teaching, assessment and learning, and teachers' wider professional engagement in the sector. There are three tailored pathways to follow, allowing students to specialise in areas relevant to their experience and career aspirations.

The programme contains modules of study providing discrete digital and planning skills that, when combined with the course project, allow the creation of a fully formed digital course. Assessment activities focus on producing tangible outputs that can be of significant practical value in real world education and training situations.

The three pathways are:

- Education, Training & Skills
- Education, Training & Skills (English): following English specialist route
- Education, Training & Skills (Mathematics): following mathematics specialist route

Progression:

On successful completion, students will be eligible to apply for Qualified Teacher Learning and Skills (QTLS) via the Society for Education and Training (ETF) and will have the opportunity to develop the skills required to teach in the FE & Skills sector. Students can progress to teach in FE colleges, secondary schools (typically post- 14 provision), sixth form colleges, academies, training providers, offender learning / prison education, or in the voluntary sector.

Level

Level 5

Duration

2 years part-time

Campus

Lincoln

Entry Requirements

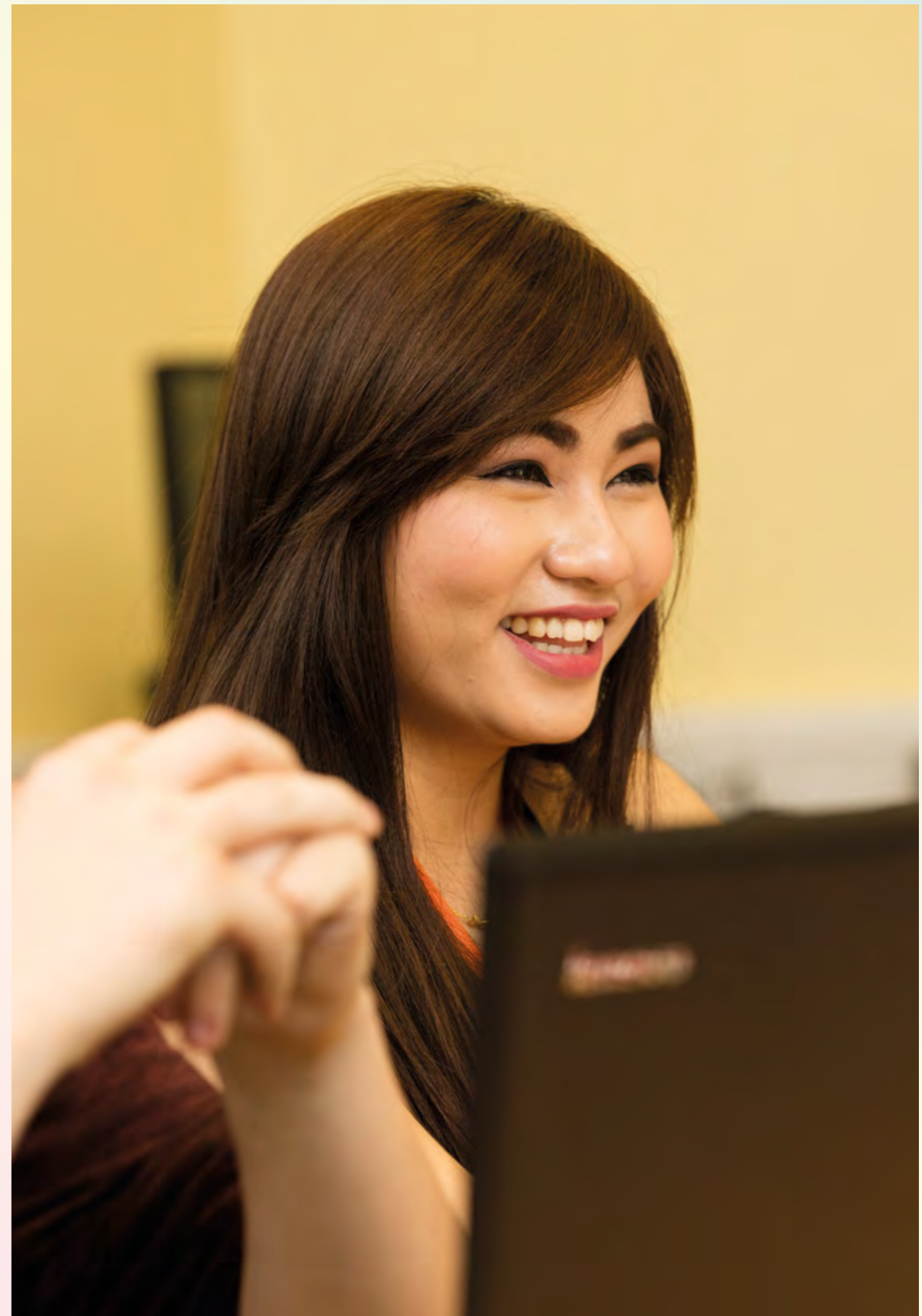
A minimum Level 3 qualification in the subject intended to teach. Maths and English at Level 2 (GCSE C/4 or above) or equivalent. Evidence of at least 100 hours of teaching over the two-year programme in a recognised education or training setting; no fewer than 50 hours per year. Appropriate reference and Disclosure and Barring Services (DBS) check. An appropriate workplace mentor.

***Subject to Validation By**



www.lincolncollege.ac.uk/certed-education

Call: 030 030 32435



Education Training and Skills*

The PGDE Education Training and Skills programme offers education and development to practising or aspiring teachers and trainers in the education, training and skills sector such as Further Education (FE) colleges, private sector training providers and the criminal justice system (offender learning / prison education).

The programme aims to develop learners with the knowledge and understanding of the principles and practice of teaching, assessment and learning, and teachers' wider professional engagement in the sector. It offers a challenging, supportive and rewarding experience to promote informed, reflective and effective teaching and professional development.

There are three tailored pathways for students to follow, allowing students to specialise in areas relevant to their experience and career aspirations.

The three pathways are:

- Education, Training and Skills
- Education, Training and Skills (English): following English specialist route
- Education, Training and Skills (Mathematics): following Mathematics specialist route

Progression:

On successful completion of this programme, students will be eligible to apply for Qualified Teacher Learning and Skills (QTLS) via the Society for Education and Training (ETF). Students will have the opportunity to develop the skills required to teach in the FE & Skills sector. Students can progress to teach in FE colleges, secondary schools (typically post-14 provision), sixth form colleges, academies, training providers, offender learning / prison education, or in the voluntary sector.

Level

Level 6

Duration

2 years part-time

Campus

Lincoln

Entry Requirements

Level 3 qualification in the subject intended to teach. Bachelor's Degree / first degree (or equivalent). Maths and English at Level 2 (GCSE C/4 or above) or equivalent. Evidence of at least 100 hours of teaching over the two-year programme in a recognised education or training setting; no fewer than 50 hours per year. Appropriate reference and Disclosure and Barring Services (DBS) check. An appropriate workplace mentor.

*Subject to Validation By



www.lincolncollege.ac.uk/pgde-education
Call: 030 030 32435



Electrical and Electronic Engineering

The HNC Electrical and Electronic Engineering programme is suitable for those currently working in the electrical/electronic engineering profession or those seeking employment.

This vocational qualification offers students practical experience in the typical tasks and requirements of engineering professionals and the underpinning academic knowledge.

This course is designed to complement students' ability to find solutions to engineering problems using developed technology and apply skills to a broad range of industrial areas, such as design, development, manufacturing, testing, maintenance and operation of electrical or electronic equipment.

Modules may include:

- Engineering Design
- Engineering Maths
- Engineering Science
- Managing a Professional Engineering Project
- Electrical and Electronic Principles
- Automation, PLCs and Robotics
- Digital Principles
- Mechatronics

Progression:

The HNC is a qualification which is widely recognised in its own right and is designed to provide students with the opportunity to develop the skills required for employment in a range of associated professions. On successful completion of the course students may continue at the College and study the HND in Engineering. Students may also choose to top up to degree level at alternative institution.



Level

Level 4

Duration

1 year full-time
2 years part-time

UCAS Institution Code

L42

UCAS Course Code

H600

Campus

Lincoln

Entry Requirements

A minimum of 48 UCAS points from A Level, BTEC or equivalent qualifications. Please see our website for subject-specific requirements.

Validated By



www.lincolncollege.ac.uk/hnc-electrical
Call: 030 030 32435



Engineering

The HND (Engineering) programme is ideal for students wishing to work within the engineering industry. Students firstly study a HNC in either Mechanical or Electrical Engineering and then have the option to progress to the HND

The HND comprises of seven units which involves studying four mandatory core subjects and a further three specialist subjects. The units have been chosen to meet a broad range of local industry needs.

Assessments are mainly by assignment with some testing in the analytical subjects. The course provides high quality industry related training for those who wish to pursue a career in the engineering sector.

Modules may include:

- Research Project
- Professional Engineering Management
- Advanced Mechanical Principles
- Further Mathematics
- Industrial Power, Electronics and Storage
- Lean Manufacturing
- Thermofluids

Progression:

HNC and HND qualifications are widely recognised in their own right and provide students with the skills required for employment in a range of associated professions. On successful completion of the course students can top up to degree level at an alternative institution.



Level

Level 5

Duration

1 year full-time
2 years part-time

UCAS Institution Code

L42

UCAS Course Code

H100

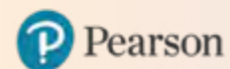
Campus

Lincoln

Entry Requirements

HNC Qualification in a relevant Engineering pathway. Please see our website for subject-specific requirements.

Validated By



www.lincolncollege.ac.uk/hnd-engineering
Call: 030 030 32435



BSc (Hons)

Electrical Engineering (Control and Network Connected Devices)

The BSc (Hons) Electrical Engineering (Control and Network Connected Devices) degree programme is delivered as part of Lincoln College's involvement in the Lincolnshire Institute of Technology.

The sector of Control and Network Connected Devices covers general control approaches alongside developments in Internet of Things (internet connected devices) and device networking which can be applied over a diverse range of connected devices.

The Lincolnshire IoT has invested heavily in sector specific equipment and software in order for this course to provide students with high level applied skills relevant to the emerging sector of Control and Network Connected Devices.

Modules may include (Year 1):

- Electrical and Mechanical Principles
- Maths for Engineers
- Analogue and Digital
- Data Acquisition
- Professional Skills and Workshop
- 4 x Computing Modules

Modules may include (Year 2):

- Control Engineering
- Engineering Design Project
- Power Electronics
- Industrial Networking
- 2 x Computing Modules

Modules may include (Year 3):

- Project Dissertation
- Personal Development and Employability
- Robotics and Mechatronics
- Manufacturing Management and Quality
- Production Integration
- 2 x Computing Modules

Progression:

Graduates may progress into employment or postgraduate study.



Level
Level 6

Duration
3 years full-time

UCAS Institution Code
L42

UCAS Course Code
6H90

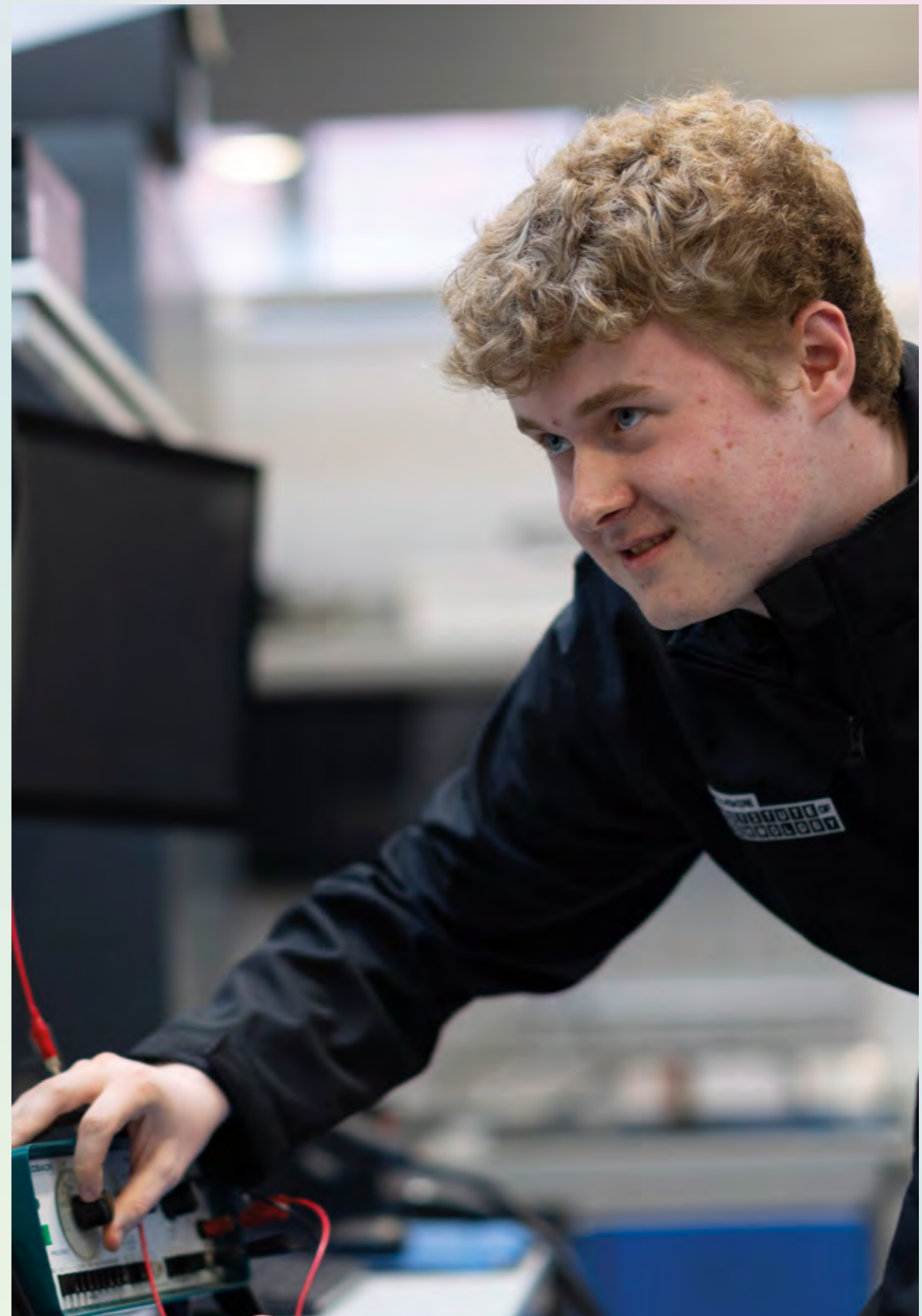
Campus
Lincoln

Entry Requirements
A minimum of 80 UCAS points from AS / A Levels, with at least one subject at A Level or BTEC Extended Diploma in a relevant subject. Other combinations of qualifications will be considered on a case by case basis. Please see our website for subject-specific requirements.

Validated By



[www.lincolncollege.ac.uk/
bsc-hons-electrical-engineering-
control](http://www.lincolncollege.ac.uk/bsc-hons-electrical-engineering-control)
Call: 030 030 32435



Electrical Engineering (Production Automation)

The BSc (Hons) Electrical Engineering (Production Automation) degree programme is delivered as part of Lincoln College's involvement in the Lincolnshire Institute of Technology.

The Production Technology sector considers current automation, robotics system, small/rapid production and prototyping technologies and explores how these can be best monitored and managed by applying the boarder technologies studied.

The Lincolnshire IoT has invested heavily in sector specific equipment and software in order for this course to provide students with high level applied skills relevant to the rapidly developing Production Automation sector.

Modules may include (Year 1):

- Electrical and Mechanical Principles
- Maths for Engineers
- Analogue and Digital
- Data Acquisition
- Professional Skills and Workshop
- Production and Automation

Modules may include (Year 2):

- Control Engineering
- Engineering Design Project
- Power Electronics
- Industrial Networking
- Automation
- Rapid Prototyping

Modules may include (Year 3):

- Project Dissertation
- Personal Development and Employability
- Robotics and Mechatronics
- Manufacturing Management and Quality
- Production Integration

Progression:

Graduates may progress into employment or postgraduate study.



Level
Level 6

Duration
3 years full-time

UCAS Institution Code
L42

UCAS Course Code
069H

Campus
Lincoln

Entry Requirements
A minimum of 80 UCAS points from A Levels, including Maths and Physics or BTEC Extended Diploma in an Engineering discipline, including Further Mathematics for Engineers. Other combinations of qualifications will be considered on a case by case basis. Please see our website for subject-specific requirements.

Validated By



www.lincolncollege.ac.uk/bsc-hons-electrical-engineering-production
Call: 030 030 32435



BSc (Hons)

Electrical Engineering (Sustainable Energy)

The BSc (Hons) Electrical Engineering (Sustainable Energy) degree programme is delivered as part of Lincoln College's involvement in the Lincolnshire Institute of Technology.

The Sustainable Energy sector covers conventional and sustainable energy sources as well as energy distribution and usage to explore how these can be best monitored and managed by applying the broader generic technologies studied.

The Lincolnshire IoT has invested heavily in sector specific equipment and software in order for this course to provide students with high level applied skills relevant to the diverse Sustainable Energy sector.

Modules may include (Year 1):

- Electrical and Mechanical Principles
- Maths for Engineers
- Analogue and Digital
- Data Acquisition
- Professional Skills and Workshop
- Conventional Energy

Modules may include (Year 2):

- Control Engineering
- Engineering Design Project
- Power Electronics
- Industrial Networking
- Renewable Energy
- Electrical Distribution and Utilisation

Modules may include (Year 3):

- Project Dissertation
- Personal Development and Employability
- Robotics and Mechatronics
- Energy Storage and Conversion
- Electrical Power in Transportation

Progression:

Graduates may progress into employment or postgraduate study.



Level
Level 6

Duration
3 years full-time

UCAS Institution Code
L42

UCAS Course Code
H690

Campus
Lincoln

Entry Requirements
A minimum of 80 UCAS points from A Levels, including Maths and Physics or BTEC Extended Diploma in an Engineering discipline, including Further Mathematics for Engineers. Other combinations of qualifications will be considered on a case by case basis. Please see our website for subject-specific requirements.

Validated By



www.lincolncollege.ac.uk/bsc-hons-electrical-engineering-sustainable
Call: 030 030 32435



International Travel and Tourism Management

The HNC International Travel and Tourism Management programme is ideal for students wishing to work within the aviation and aerospace industry - one of the world's largest employment fields. Students firstly study the HNC and then have the option to progress to the HND Level 5 course.

The programme can lead to a fascinating and rewarding career. With high demand for air travel, career opportunities are expected to increase.

We have a strong focus on employability, and our training partners and professional connections can give students the chance to immerse themselves in the industry.

Students learn from skilled lecturers who have a high level of working knowledge, based on industry experience. Their teaching is designed to enable students to gain a deep insight into the latest trends and requirements of the aerospace and aviation sector. As well as receiving interesting lectures and seminars, students are also supported by personal tutors, module leaders and course leaders.

As part of the programme, students can choose to take an optional structured pilot training programme delivered by external partners at an additional cost that could lead to a Private Pilot Licence (PPL). Details will be available once enrolled on the course.

Modules may include:

- The Contemporary Travel and Tourism Industry
- Managing the Customer Experience
- Professional Identity and Practice
- The Travel and Tourism Business Toolkit
- Leadership and Management for Service Industries (Pearson-set)
- Managing Aviation Services
- Passenger Transport Services
- Human Resource Management

Progression:

The HNC is a qualification which is widely recognised in its own right and is designed to provide students with the skills required for employment in a range of associated professions. On successful completion of the course students may apply to continue at the College to study the HND International Travel and Tourism Management (Aviation).



Level

Level 4

Duration

1 year full-time
2 years part-time

UCAS Institution Code

L42

UCAS Course Code

N830

Campus

Newark

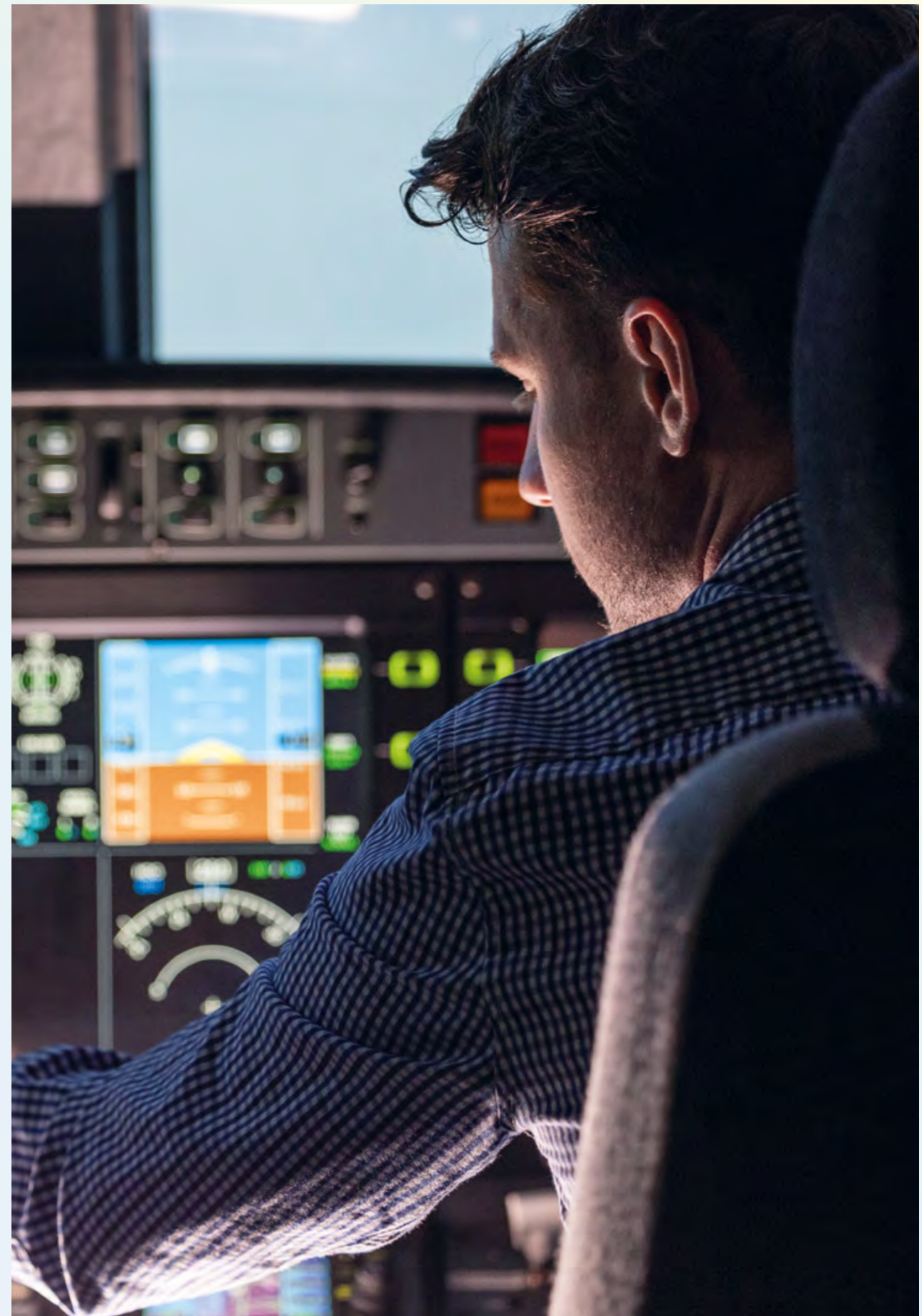
Entry Requirements

A minimum of 48 UCAS points from A Level, BTEC or equivalent qualifications.
Plus: GCSE English and Maths - Grade C/4 or above.
Please see our website for subject-specific requirements.

Validated By



www.lincolncollege.ac.uk/hnc-international-travel
Call: 030 030 32435



International Travel and Tourism Management (Aviation)

The HND International Travel and Tourism Management (Aviation) programme is ideal for students wishing to work within the aviation and aerospace industry. Students firstly study the HNC International Travel and Tourism Management and then have the option to progress to the HND.

The programme can lead to a fascinating and rewarding career. With high demand for air travel, career opportunities are expected to increase. Course graduates could secure roles that range from aviation management to continuing their flight training to become a commercial airline pilot.

The Pearson BTEC Higher National Diploma (HND) is at Level 5 (the same as the first and second year of a UK honours degree). It is a seven-unit qualification which involves studying two mandatory core subjects and a further five specialist subjects. The units have been selected to meet a broad range of local industry needs.

As part of the programme, students can choose to take an optional structured pilot training programme delivered by external partners at an additional cost that could lead to a Private Pilot Licence (PPL). Details will be available once enrolled on the course.

Modules may include:

- Research Project (Pearson-set)
- Tourism Consumer Behaviour and Insight
- Airline Operations Management
- Airport Operations Management
- Strategic Planning for Air Transport
- Organisational Behaviour
- Strategic Human Resource Management

Progression:

HNC and HND qualifications are widely recognised in their own right and provide students with the skills required for employment in a range of associated professions. On successful completion of the course students may top-up to degree level with our partner institution, Nottingham Trent University (*subject to validation).



Level

Level 5

Duration

1 year full-time
2 years part-time

UCAS Institution Code

L42

UCAS Course Code

N803

Campus

Lincoln

Entry Requirements

HNC Qualification in International Travel and Tourism Management and GCSE English and Maths at Grade C/4 or above. Please see our website for subject-specific requirements.

Validated By



www.lincolncollege.ac.uk/hnd-international-travel
Call: 030 030 32435



Mechanical Engineering

The HNC Mechanical Engineering programme is ideal for students wishing to work within the engineering industry.

The HNC is an eight unit qualification which involves studying three mandatory core subjects and a further five specialist subjects.

The units have been chosen to meet a broad range of local industry needs following close consultation with employers.

The course provides high quality industry related training for those who wish to pursue a career in the engineering sector.

Assessments are mainly by assignment with some testing in the analytical subjects.

Modules may include:

- Engineering Design
- Engineering Maths
- Engineering Science
- Managing a Professional Engineering Project
- Fundamentals of Thermodynamics and Heat Engines
- Mechanical Principles
- Quality and Process Improvement
- Materials

Progression:

The HNC is a qualification which is widely recognised in its own right and is designed to provide students with the opportunity to develop the skills required for employment in a range of associated professions. On successful completion of the course students may continue at the College and study the HND in Engineering. Students may also choose to top up to degree level at an alternative institution.



Level

Level 4

Duration

1 year full-time
2 years part-time

UCAS Institution Code

L42

UCAS Course Code

003H

Campus

Lincoln

Entry Requirements

A minimum of 48 UCAS points from A Level, BTEC or equivalent qualifications. Please see our website for subject-specific requirements.

Validated By



www.lincolncollege.ac.uk/hnc-mechanical

Call: 030 030 32435



“I chose to study at Lincoln College because I really liked the setting and loved the campus. My aspiration now I’ve graduated is to Join the Royal Air Force”



Georgia Davey
HNC Mechanical Engineering

Mobile, Web, Virtual and Streaming Technologies

The DipHE Mobile, Web, Virtual and Streaming Technologies is the ideal introduction to the complex and exciting world of online, mobile and virtual reality development.

It provides post Further Education learners and existing software developers, electronics engineers and electronic media developers with the fundamental skills to work in industries that combine software, web, mobile and virtual reality skills to develop new and innovative interactive solutions for a wide range of industries and applications.

The course is designed to take a learner with limited experience in the field of computing to being skilled in the techniques required for them to work in the areas of web development, mobile applications production, virtual and augmented reality industries.

Modules may include:

- Introduction to Programming
- HCI and User Interface Design
- Web Development
- VR Development Principles
- Fundamentals of Network and Software Security
- Responsive Web Development and Streaming Technologies
- VR Development
- Mobile Applications Development
- Server-Side Development
- Mobile and AR development
- Database Principles and Technologies
- Individual Digital Solutions Project

Progression:

Successfully completing the Diploma could open opportunities in a broad range of professions who need specialists in mobile, web and virtual technologies alongside the traditional career paths of Mobile Applications Developer, Web Developer, Software Engineer, Games Developer and Virtual Reality Developer. The DipHE can be topped up to a BSc in Computer Science with an additional year of study.



Level

Level 5

Duration

2 years full-time
4 years part-time

UCAS Institution Code

L42

UCAS Course Code

I160

Campus

Lincoln

Entry Requirements

A minimum of 64 UCAS points from A Level, BTEC or equivalent qualifications. Please see our website for subject-specific requirements.

Validated By



www.lincolncollege.ac.uk/diphe-mobile-web
Call: 030 030 32435



Musical Instrument Craft (Guitar Making and Repair)

The BA (Hons) Musical Instrument Craft (Guitar Making and Repair) is a highly specialised, practical programme that was established in 1984 and is situated at the heart of the Newark College campus.

The course teaches the craft of making classical and steel stringed guitars and aims to equip students with the knowledge and practical skills that will enable them to be guitar makers in their own right.

The full-time programme consists of three years and by the end students will have the opportunity to build a minimum of three guitars of contrasting designs.

The tutors work as experienced professional guitar makers who teach part-time and are able to bring their considerable skills and experience as well as their understanding of current business practice and construction techniques to the course.

The course has close links with players and other makers who visit to lead special workshops and discussions, as well as providing students with valuable feedback and comments about their work.

Visitors have included internationally renowned musicians: John Williams, John Etheridge, Clive Carroll, Paul Gregory, Steve Hicks, Mark Ashford and Pierre Bensusan. Visiting guitar makers have included Paul Fischer, Gary Southwell, Peter Barton, David Reid, Stephen Sedgewick and N.K. Forster.

We have strong links with many luthiers across Europe and have collaborated with guitar makers from Finland, Belgium, Italy, Spain and France.

The Graebner Crisford Prize

A cash prize of £1,000 will be offered to one outstanding graduating student in each pathway on the Musical Instrument Crafts degree. The prize is from a generous donation from The ACH Crisford Charitable Foundation who set up the scheme to support our learners and recognise the unique nature of these courses. The award will be judged by staff.

Modules may include:

- Anatomy and Design
- Basic Techniques
- Workshop Practice
- Making Specialist Tools 1
- Historical and Contextual Studies

Progression:

Following completion of this programme students may wish to pursue further academic study in music or seek employment or self-employment in the industry.

Level
Level 6

Duration
3 years full-time
6 years part-time

UCAS Institution Code
L42

UCAS Course Code
J952

Campus
Newark

Entry Requirements
A minimum of 48 UCAS points in a relevant subject. GCSE English and Maths at Grade C/4 or above. Applicants are required to attend an interview. We consider experience and practical skills in lieu of A Levels/BTECs.

Validated By



www.lincolncollege.ac.uk/ba-hons-mic-guitar
Call: 030 030 32435



“Not knowing anything about instrument making and very little about woodwork in general, they taught me everything I needed to know to build my first three guitars from scratch using mostly hand tools. All of this happened in the wonderful atmosphere of a small workshop”



Dennis Tolz
BA (Hons) Musical Instrument Craft
(Guitar Making and Repair)

Musical Instrument Craft (Piano Tuning and Restoration)

The BA (Hons) Musical Instrument Craft (Piano Tuning and Restoration) is the only programme of its kind in the UK. The course aims to prepare learners with the skills needed to join the piano trade.

The Newark Piano School at Newark College is situated in a specialist building close to the main College campus, giving easy access to College facilities and the town centre.

The School's modern, well-appointed facilities, boast 16 individual tuning rooms containing more than fifty pianos - which are used exclusively for piano tuning practice.

The dedicated workshops are fitted with tailored workbenches and storage facilities and are fully health and safety and COSHH compliant. Large stocks of trade specific tools, materials and parts are available along with numerous and varied types of upright and grand pianos. Together, this ensures that students have the opportunity to gain a wealth of practical experience of all aspects of piano tuning, restoration and repair.

Learners can also benefit from the School's strong links with industry - a regular feature of which is visiting speakers from trade organisations and suppliers.

The Graebner Crisford Prize

A cash prize of £1,000 will be offered to one outstanding graduating student in each pathway on the Musical Instrument Crafts degree. The prize is from a generous donation from The ACH Crisford Charitable Foundation who set up the scheme to support our learners and recognise the unique nature of these courses. The award will be judged by staff.

Modules may include:

- Anatomy and Design
- Basic Techniques
- Workshop Practice
- Making Specialist Tools 1
- Historical and Contextual Studies

Progression:

Following completion of this programme students may wish to pursue further academic study in music or seek employment or self-employment in the industry.

Level
Level 6

Duration
3 years full-time

UCAS Institution Code
L42

UCAS Course Code
J951

Campus
Newark

Entry Requirements
A minimum of 48 UCAS points in a relevant subject. GCSE English and Maths at Grade C/4 or above. Applicants are required to attend an interview. We consider experience and practical skills in lieu of A Levels/BTECs.

Validated By



www.lincolncollege.ac.uk/ba-hons-mic-piano
Call: 030 030 32435

“My three years at Newark will be regarded as the best three years of my life, I would go back and do it all again in a heartbeat”



Chris Walden
BA (Hons) Musical Instrument Craft
(Piano Tuning and Restoration)



BA (Hons)

Musical Instrument Craft (Violin Making and Repair)

The BA (Hons) Musical Instrument Craft (Violin Making and Repair) is designed to give students the opportunity to learn professional techniques for the repair and restoration of stringed instruments covering the main requirements of the violin trade, including bow repair. All of these skills are as much in demand today as they were 300 or 400 years ago.

The success of the course lies in its combination of enthusiastic and experienced tutors, comprehensive course materials and practical demonstrations complemented by ample workshop time.

The emphasis is on allowing the student to gain as much practical experience as possible.

The School of Violin Making and Restoration has strong links with the international violin trade. Experts in the field act as advisors to the course as well as visiting to give lectures. Graduates can be found in many of the top workshops around the world as makers and restorers of the violin, viola and cello.

Situated in its own building in the centre of historic Newark, the School is itself an international community with many social and cultural opportunities.

The Graebner Crisford Prize

A cash prize of £1,000 will be offered to one outstanding graduating student in each pathway on the Musical Instrument Crafts degree. The prize is from a generous donation from The ACH Crisford Charitable Foundation who set up the scheme to support our learners and recognise the unique nature of these courses. The award will be judged by staff.

Modules may include:

- Anatomy and Design
- Basic Techniques
- Workshop Practice
- Making Specialist Tools 1
- Historical and Contextual Studies

Progression:

Following completion of this programme students may wish to pursue further academic study in music or seek employment or self-employment in the industry.

Level
Level 6

Duration
3 years full-time

UCAS Institution Code
L42

UCAS Course Code
J950

Campus
Newark

Entry Requirements
A minimum of 48 UCAS points in a relevant subject. GCSE English and Maths at Grade C/4 or above. Applicants are required to attend an interview. We consider experience and practical skills in lieu of A Levels/BTECs.

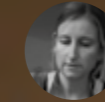
Validated By


**UNIVERSITY
OF HULL**



[www.lincolncollege.ac.uk/
ba-hons-mic-violin](http://www.lincolncollege.ac.uk/ba-hons-mic-violin)
Call: 030 030 32435

“What I enjoyed most about the course is that I instantly felt that the other people who were on the course were just like me. It takes a certain sort of person to study lutherie I think!”



Becky Houghton
BA (Hons) Musical Instrument Craft
(Violin Making and Repair)



Musical Instrument Craft (Woodwind Making and Repair)

The BA (Hons) Musical Instrument Craft (Woodwind Making and Repair) programme is designed to help produce skilled craftspeople who are able to repair a whole range of instruments in the woodwind family, from piccolo to saxophone.

The programme aims to introduce the precise skills needed to repair a whole variety of woodwind instruments. Practical skills are taught in our well-equipped workshop.

The course has a making component which has traditionally focused on the manufacture of a Boehm system clarinet, in more recent years we have diversified and students have also made oboes, flutes, bassoons and even soprano saxophones all from basic raw materials. The work on these projects starts in the second year and culminates in the third year with the student's final major project.

The programme is housed on the Newark campus, providing easy access to computer facilities, specialist books and other College amenities.

The programme has excellent links with industry. Companies regularly contact the College to offer employment opportunities. Previous graduates have gone on to work for a wide range of instrument manufacturers and repairers. Many have also started their own successful businesses, and in turn provide employment for other students as they graduate.

The Graebner Crisford Prize

A cash prize of £1,000 will be offered to one outstanding graduating student in each pathway on the Musical Instrument Crafts degree. The prize is from a generous donation from The ACH Crisford Charitable Foundation who set up the scheme to support our learners and recognise the unique nature of these courses. The award will be judged by staff.

Modules may include:

- Anatomy and Design
- Basic Techniques
- Workshop Practice
- Making Specialist Tools 1
- Historical and Contextual Studies

Progression:

Following completion of this programme students may wish to pursue further academic study in music or seek employment or self-employment in the industry.

Level

Level 6

Duration

3 years full-time

UCAS Institution Code

L42

UCAS Course Code

J953

Campus

Newark

Entry Requirements

A minimum of 48 UCAS points in a relevant subject. GCSE English and Maths at Grade C/4 or above. Applicants are required to attend an interview. We consider experience and practical skills in lieu of A Levels/BTECs.

Validated By



www.lincolncollege.ac.uk/ba-hons-mic-woodwind
Call: 030 030 32435



“My advice for future students is quite earnest and that is don't be too proud to ask for help if you need it in all facets of your education and time at College. My tutors have been really supportive”



Kit Brennan
BA (Hons) Musical Instrument Craft
(Woodwind Making and Repair)

Professional Policing

The BA (Hons) Professional Policing degree programme is designed to prepare students for the fast-moving world of policing by following a curriculum written and licensed by the College of Policing.

Studying on our BA (Hons) Professional Policing programme allows learners the opportunity to study a wide range of theoretical and legislative subjects and gain the knowledge required for a rewarding career in the police service.

Modules may include (Year 1):

- Understanding The Police Constable Role
- Policing Communities
- Research Methods and Academic Skills for Policing
- Police Procedure and Evidence
- Criminal Justice
- Criminology and Crime Prevention

Modules may include (Year 2):

- Criminal Investigation
- Information and Intelligence
- Policing the Roads
- Police Response and Major Incidents
- Police Accountability, Decision-making and Discretion
- Police Problem-solving Models & Theories

Modules may include (Year 3):

- Serious and Organised Crime
- Policing Mental Health, Vulnerability Risk Policing Abuse
- Public Protection Research Project (Dissertation)
- Plus one optional specialism module from: Domestic Abuse, Psychopathy, Murder: Dynamics, Pathologies & Investigation or Populism, Extremism & Violence

Progression:

The programme aims for graduates to be equipped with an in-depth understanding of the role of a police officer today, including a thorough grasp of criminal justice systems and the powers and laws used by the police throughout England and Wales. Graduates may progress to careers in policing. Please note that completion of this degree does not guarantee employment as a police officer or police staff.

Level
Level 6

Duration
3 years full-time

UCAS Institution Code
L42

UCAS Course Code
P100

Campus
Lincoln

Entry Requirements
A minimum of 120 UCAS points from A Level, BTEC or equivalent qualifications. Please see our website for subject-specific requirements.

Validated By



www.lincolncollege.ac.uk/ba-hons-policing
Call: 030 030 32435



Social Science

The BA (Hons) Social Science degree programme looks at the growing area of the recognised study of Social Science, with an evaluation of the psychological, political and sociological forces that shape our decisions at personal, collective and global levels.

Alongside more traditional elements of the Social Sciences, such as Penology and Social Policy, the multidisciplinary approach demonstrates the link to new and emerging areas of employment and training for graduates.

A choice directed towards Politics and Government builds on insight into core dimensions of culture, community and political representation in the context of resource allocation/distribution and also has many links with local organisations for students to benefit from work experience and shadowing opportunities.

Modules may include:

- The Criminal Gaze
- Introduction to Social Policy
- Key Concepts in Social Research
- Introduction to Law and the Criminal Justice System
- An Introduction to the British Political System

Progression:

Graduates have the opportunity to develop a strong set of practical skills for pursuing careers in a range of sectors. For example, Prison and Probation Services, Local Government and Police Authorities. After successful completion of the BA (Hons) Social Science students may also progress to postgraduate study, research or employment.

Level

Level 6

Duration

3 years full-time
6 years part-time

UCAS Institution Code

L42

UCAS Course Code

L301

Campus

Lincoln

Entry Requirements

A minimum of 64 UCAS points from A Level, BTEC or equivalent qualifications. Please see our website for subject-specific requirements.

Validated By



www.lincolncollege.ac.uk/ba-hons-social-science
Call: 030 030 32435



Social Science (Criminology and Law)

The BA (Hons) Social Science (Criminology and Law) degree programme incorporates multi-disciplinary theoretical explanations of crime and deviance to key issues and aspects of the criminal justice system, support agencies and networks.

Students have the opportunity to consider practical scenarios in a variety of aspects of the Criminal Justice System (CJS), such as public perception of communities on crime.

This enables students the theoretical knowledge to develop their critical thinking and problem-solving skills in crime prevention and how these are applied in society and in practical criminal justice settings.

Students' learning is enhanced by strong links to local employers and application of their theoretical knowledge to researching employment choices and ideas in the criminal justice system and other social science related careers.

Modules may include:

- The Criminal Gaze
- Introduction to Social Policy
- Key Concepts in Social Research
- Introduction to Law and the Criminal Justice System
- Introduction to Psychology
- Policing Society

Progression:

Graduates will have the opportunity to develop a strong set of practical skills for pursuing careers in a range of sectors. For example, Prison and Probation Services, Local Government, the police and agents of the CJS. After successful completion of the BA (Hons) Social Science (Criminology and Law) students may progress to postgraduate study, research or employment.

Level
Level 6

Duration
3 years full-time

UCAS Institution Code
L42

UCAS Course Code
L302

Campus
Lincoln

Entry Requirements
A minimum of 64 UCAS points from A Level, BTEC or equivalent qualifications. Please see our website for subject-specific requirements.

Validated By



[www.lincolncollege.ac.uk/
ba-hons-social-science-
criminology](http://www.lincolncollege.ac.uk/ba-hons-social-science-criminology)
Call: 030 030 32435



Sports Coaching, Education and Development

The FdSc Sports Coaching, Education and development programme aims to develop students' practical skills that are essential for the industry, whilst simultaneously expanding their academic knowledge and understanding of key theoretical concepts.

A distinctive feature of this Foundation Degree is providing students with authentic and innovative work-based learning opportunities.

Working in real-life environments is crucial in providing students with the work-ready skills needed to succeed within the sports coaching, sports development, and education sector.

Alongside the vocational elements of the programme, students also study a range of underpinning theories that facilitate their development.

Modules may include (Year 1):

- Research and Study Skills for HE
- What is Research?
- Fundamentals of Sports Coaching
- Sports Coaching and PE Experience 1
- Understanding Learning for Teaching and Coaching
- Teaching and Learning: Theory to Practice
- School Sport and PE: Primary Education
- Sport Development Principles

Modules may include (Year 2):

- Research Project
- Developing Physical Literacy in Young People
- Sports Coaching and PE Experience 2
- An Introduction to the Classroom
- Teaching in the Digital World
- School Sport and PE: Secondary Education
- Contemporary Issues in Sport

Progression:

Many of the students who choose to study this course are seeking careers within the sports coaching, sports development, or education sector. This Foundation Degree qualification is a Level 5 qualification in its own right that can lead students directly to employment but is often seen as a step towards attaining a full BSc (Hons) degree, with most students continuing onto the BSc (Hons) Sports Coaching, Education and Development (Top-Up) degree delivered here at Lincoln College.

Level
Level 5

Duration
2 years full-time

UCAS Institution Code
L42

UCAS Course Code
C654

Campus
Lincoln

Entry Requirements
A minimum of 48 UCAS points from A Level, BTEC or equivalent qualifications. Please see our website for subject-specific requirements.

Validated By



BISHOP
GROSSETESTE
UNIVERSITY



[www.lincolncollege.ac.uk/
fdsc-sports-coaching](http://www.lincolncollege.ac.uk/fdsc-sports-coaching)
Call: 030 030 32435



BSc (Hons)

Sports Coaching, Education and Development (Top-Up)

The BSc (Hons) Sports Coaching, Education and Development (Top-Up) programme aims to develop students' knowledge and skills in the domains of sports coaching, sports development and education - enabling graduates to be capable of operating in a wide range of coaching and education environments, utilising critical reflection skills to ensure continuous development within their practice.

The programme is designed to enable students who have already completed a sub-degree (HND or Foundation Degree) within this subject area to continue their studies on to Honours Degree level.

Modules may include:

- Research Proposal
- Dissertation
- Sports Coaching Behaviours
- Sports Development in the Community
- Teaching in the Physical Classroom

Progression:

The course is designed to prepare and aid learners for a career in the sports coaching, education and sports development industries. Graduates may be eligible to continue to postgraduate level in a related field or to further their teaching ambitions by pursuing a teacher training qualification.

Level

Level 6

Duration

1 year full-time

UCAS Institution Code

L42

UCAS Course Code

C610

Campus

Lincoln

Entry Requirements

A Level 5 award (e.g. Foundation Degree/HND) in a related discipline, comprised of 240 credits, with a minimum of 120 credits at Level 5.

Validated By



[www.lincolncollege.ac.uk/
bsc-hons-sports-coaching](http://www.lincolncollege.ac.uk/bsc-hons-sports-coaching)
Call: 030 030 32435

"I've loved every minute of the course and I'm pleased to be carrying on with my career"



Gemma Bell
BSc (Hons) Sports Coaching,
Education and Development



Sports Therapy

The FdSc Sports Therapy programme aims to provide students with the skills required for a career in sports therapy.

The FdSc Sports Therapy is a modularised programme that will involve participation in a work-based, on-site clinic and vocational learning activities, alongside the study of a range of underpinning theory related to Sports Therapy.

Students will have the opportunity to gain the transferable skills necessary to be effective at work, including communication, teamwork, problem solving, and the use of Information Technology. The theoretical and practical techniques meet the National Occupational Standards for Sports Therapy.

Modules may include (Year 1):

- Research and Study Skills for HE
- What is Research?
- Testing and Screening of the Lower Limb
- Testing and Screening of the Upper Limb
- Musculoskeletal Anatomy in the Production of Movement
- Nutritional Strategies within Injury Rehabilitation
- Manual Soft Tissue Skills
- Pathology of Injury

Modules may include (Year 2):

- Research Project
- Functional Screening for Injury Prevention
- Strength and Conditioning to Improve Performance
- Advanced Sports Therapy Skills
- Skills for Business within Clinical Practice
- Clinical Sports Therapy

Progression:

Graduates of this course may apply for progression on to the BSc (Hons) Sports Therapy (Top-Up) at Lincoln College. On successful completion of the FdSc, students may seek careers in a wide range of professions, such as sport therapy.

Level

Level 5

Duration

2 years full-time

UCAS Institution Code

L42

UCAS Course Code

C630

Campus

Lincoln

Entry Requirements

A minimum of 48 UCAS points from A Level, BTEC or equivalent qualifications. Please see our website for subject-specific requirements.

Validated By



[www.lincolncollege.ac.uk/
fdsc-sports-therapy](http://www.lincolncollege.ac.uk/fdsc-sports-therapy)

Call: 030 030 32435



BSc (Hons)

Sports Therapy (Top-Up)

This BSc (Hons) Sports Therapy (Top-Up) programme aims to prepare learners for a career as a sports therapist by developing practitioners who can work autonomously and use critical reflection to draw upon experiences and knowledge to facilitate the performance of effective practice.

The programme is designed to enable students who have already completed a sub-degree (eg. HND or Foundation Degree) within this subject area to continue their studies on to Honours Degree level.

Students will also work alongside the FdSc Sports Therapy students in the on-site Sports Therapy Teaching Clinic to gain hands on experience.

Modules may include:

- Research Proposal
- Dissertation
- Application of Advanced Sports Therapy Skills
- Athlete Support through Sports Science
- Injury Rehabilitation

Progression:

Graduates of this programme could source employment within the following: local, regional and national sports teams or health and fitness centres as sports massage therapists, current sports therapy clinics, with professional athletes and/or teams, or sports therapy tutoring. Graduates could also work as a self-employed therapist or continue on to postgraduate study.

Level
Level 6

Duration
1 year full-time

UCAS Institution Code
L42

UCAS Course Code
C6TU

Campus
Lincoln

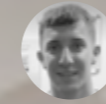
Entry Requirements
A Level 5 award (e.g. Foundation Degree/HND) in a related discipline, comprised of 240 credits, with a minimum of 120 credits at Level 5. For external applications, relevant vocational sports therapy qualifications will be required.

Validated By



[www.lincolncollege.ac.uk/
bsc-hons-sports-therapy](http://www.lincolncollege.ac.uk/bsc-hons-sports-therapy)
Call: 030 030 32435

"I've got my own injury and rehabilitation business, so I wanted to study this course to improve my skills and confidence"



Jamie Robinson
BSc (Hons) Sports Therapy



What's Next?

1

Research the course in more detail on our website or on UCAS.

www.lincolncollege.ac.uk/university-centre



2

Register to attend an open day to speak with our tutors, see the facilities and get a feel of the campus.

www.lincolncollege.ac.uk/open-days



3

Contact us to discuss any questions or to learn more about studying with us.

Apply via UCAS for full-time courses or via our website college portal for part-time.

he@lincolncollege.ac.uk

Course Enquiry Line:
030 030 32435

HE Admin Team:
01522 876 398

4

Stay in touch! Follow us on our social media to stay up to date with what's happening at Lincoln College.

Lincoln College

- [lincolncollegeuk](#)
- [@lincoln_college](#)
- [lincolncollegeuk](#)
- [lincoln_college](#)
- [Lincoln College](#)
- [Lincoln College \(UK\)](#)
- [@lincolncollegeuk](#)

Newark College

- [@newark_college](#)
- [NewarkCollegeUK](#)

ASI

- [@asiNewark](#)
- [ASINewarkUK](#)
- [asi-newark](#)

Careers Advice

If you need further information on Careers at Lincoln College please see our website:

lincolncollege-uk.libguides.com/careers/home



UCAS

For more information and advice on progression to Higher Education, visit:

www.ucas.com



Student Finance

For information on Student Loans please visit www.slc.co.uk or for more information on Student Finance please visit:

www.gov.uk/student-finance

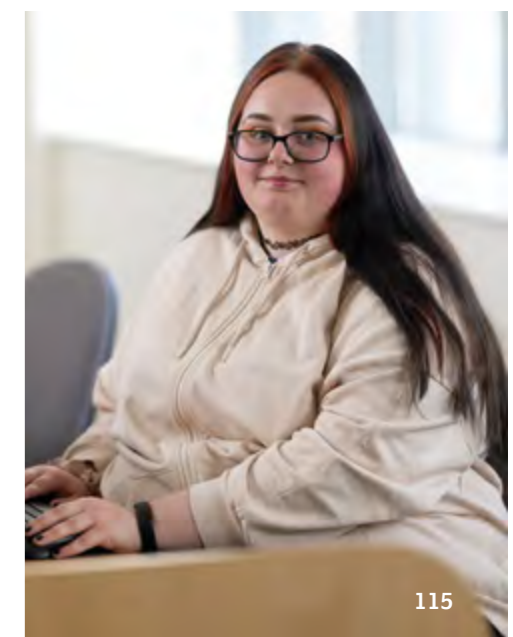
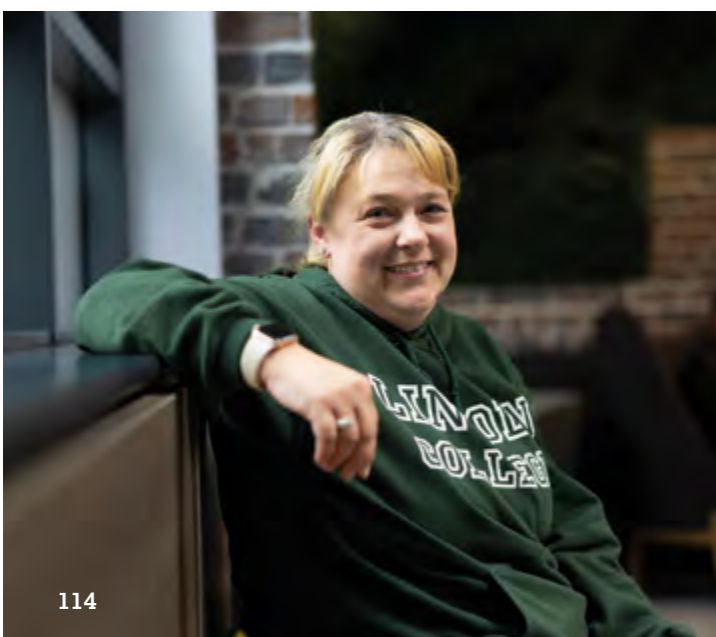


Student Discount

Get access to hundreds of student discounts and deals on everything from eating out and fashion to technology, travel, and daily essentials:

www.totum.com





Lincoln

Monks Rd, Lincoln LN2 5HQ
For advice call: **030 030 32435**

Newark

Friary Rd, Newark NG24 1PB
For advice call: **01636 680680**



Please pass me on to a friend or recycle me.

All information in this guide is correct at the time of printing.
For the latest information please visit our website.

lincolncollege.ac.uk

